

参考資料4: 特定ジャーナル分析に関する基礎データ

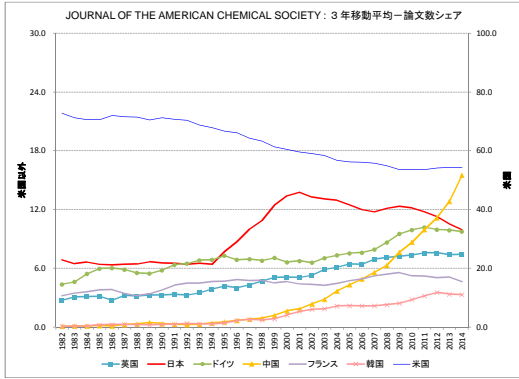
調査資料-262 科学研究のベンチマーキング2017の図表63に示されている特定ジャーナル分析対象23誌リストにおける、主要国のシェアの変化を示す。

図表63 特定ジャーナル分析対象23誌リスト

No.	IF上位5	調査資料内の 図表番号	ジャーナル名	22分野名	ページ数
1			CURRENT BIOLOGY	生物学・生化学	R4-1
2			NUCLEIC ACIDS RESEARCH	生物学・生化学	R4-2
3			FASEB JOURNAL	生物学・生化学	R4-3
4			ANGEWANDTE CHEMIE-INTERNATIONAL EDITION	化学	R4-4
5			NANO LETTERS	化学	R4-5
6			JOURNAL OF THE AMERICAN CHEMICAL SOCIETY	化学	R4-6
7	○	図表66	NEW ENGLAND JOURNAL OF MEDICINE	臨床医学	R4-7
8	○	図表67	LANCET	臨床医学	R4-8
9			JOURNAL OF CLINICAL INVESTIGATION	臨床医学	R4-9
10			ADVANCED MATERIALS	材料科学	R4-10
11			ADVANCED FUNCTIONAL MATERIALS	材料科学	R4-11
12	○	図表68	CELL	分子生物学・遺伝学	R4-12
13			MOLECULAR CELL	分子生物学・遺伝学	R4-13
14			JOURNAL OF CELL BIOLOGY	分子生物学・遺伝学	R4-14
15	○	図表64	NATURE	複合領域	R4-15
16	○	図表65	SCIENCE	複合領域	R4-16
17			PROCEEDINGS OF THE NATIONAL ACADEMY OF SCIENCES OF THE UNITED STATES OF	複合領域	R4-17
18			BIOLOGICAL PSYCHIATRY	神経科学・行動学	R4-18
19			JOURNAL OF NEUROSCIENCE	神経科学・行動学	R4-19
20			CEREBRAL CORTEX	神経科学・行動学	R4-20
21			PHYSICAL REVIEW LETTERS	物理学	R4-21
22			PLANT JOURNAL	植物・動物学	R4-22
23			ASTROPHYSICAL JOURNAL	宇宙科学	R4-23

参考資料4 特定ジャーナル分析に関する基礎データ

図表名 JOURNAL OF THE AMERICAN CHEMICAL SOCIETY : 3年移動平均#米国以外
JOURNAL OF THE AMERICAN CHEMICAL SOCIETY : 3年移動平均#米国

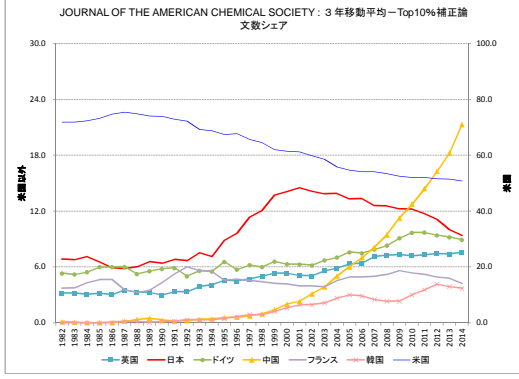


図表名 JOURNAL OF THE AMERICAN CHEMICAL SOCIETY

国コード	国名	1981	1982	1983	1984	1985	1986	1987	1988	1989	1990	1991	1992	1993	1994	1995	1996	1997	1998	1999	2000	2001	2002	2003	2004	2005	2006	2007	2008	2009	2010	2011	2012	2013	2014	2015
D001	USA	781	747	793	811	809	801	751	780	847	818	849	938	963	812	868	1470	1414	1404	1318	1324	1374	1814	1733	1812	1880	1827	1675	1770	1786	1861	1727	1871	1537	1460	1273
D002	UK	34	23	29	49	28	30	32	43	30	30	35	38	44	36	52	60	68	111	108	114	117	130	122	212	202	197	240	238	222	250	241	186	191	191	
D003	JAPAN	80	82	79	79	79	66	64	70	74	81	79	83	92	81	78	207	211	200	251	261	317	307	389	411	439	376	337	394	420	378	370	350	300	290	231
D004	GERMANY	51	35	52	69	68	71	58	62	84	63	78	83	82	94	93	159	139	164	140	161	138	190	197	238	268	237	227	284	312	328	317	314	277	239	231
D005	PEOPLES R CHINA	1	1	0	2	1	2	0	4	4	4	2	2	3	4	7	14	17	21	21	37	32	45	93	111	141	185	198	203	237	301	288	339	381	383	497
D006	FRANCE	27	30	34	40	48	42	35	34	37	46	51	60	64	52	66	103	106	106	99	91	118	109	120	145	158	160	153	179	182	143	168	148	160	96	
D010	SOUTH KOREA	0	0	0	0	0	0	0	0	0	0	0	0	0	0	0	0	0	0	0	0	0	0	0	0	0	0	0	0	0	0	0	0	0	0	0
	日本	1020	1022	1091	1185	1135	1106	1033	1119	1176	1110	1182	1332	1392	1224	1305	2228	2168	2279	2091	2263	2327	2480	2494	3197	3191	3298	2958	3281	3188	3170	3170	3099	2440	2481	2378

国コード	国名	1981	1982	1983	1984	1985	1986	1987	1988	1989	1990	1991	1992	1993	1994	1995	1996	1997	1998	1999	2000	2001	2002	2003	2004	2005	2006	2007	2008	2009	2010	2011	2012	2013	2014	2015
D001	USA	767.0	783.7	803.0	805.7	785.7	777.4	782.7	815.0	836.0	868.3	916.7	904.3	857.0	1056.0	1266.7	1429.3	1378.0	1348.0	1338.0	1437.3	1573.7	1719.7	1608.3	1838.7	1784.0	1757.3	1743.7	1735.7	1721.3	1683.0	1645.0	1556.0	1423.3		
D002	UK	28.7	33.7	38.3	38.7	30.0	35.0	37.7	38.3	33.0	33.0	37.7	42.3	46.0	50.7	68.0	78.0	85.7	102.0	111.0	113.0	121.7	141.3	173.0	194.7	210.0	205.0	218.3	226.0	233.3	236.7	237.7	229.7	211.3	184.7	
D003	JAPAN	72.3	71.0	75.3	73.0	69.0	69.3	71.3	77.0	79.7	83.3	85.3	83.7	122.0	165.3	222.0	206.7	233.3	206.3	231.7	353.3	384.7	417.0	468.7	584.0	570.7	585.3	589.0	614.3	689.0	687.7	642.7	601.0	590.0	529.0	450.0
D004	GERMANY	46.0	50.7	61.7	68.0	65.7	63.7	61.3	63.0	69.3	69.3	84.3	89.7	89.0	115.3	193.3	154.0	147.7	155.0	146.3	169.3	176.0	207.7	233.0	246.3	248.0	243.3	243.0	260.0	319.0	319.7	302.7	283.3	256.7	206.0	
D005	PEOPLES R CHINA	0.7	1.0	1.0	1.7	1.0	2.7	3.0	2.3	4.0	3.0	3.0	3.0	3.7	5.3	8.3	12.7	17.0	26.3	38.7	47.7	63.3	65.0	117.0	111.0	137.0	176.7	192.7	147.0	178.7	178.7	172.3	133.0	101.0	87.0	
D006	FRANCE	33.7	38.0	40.7	43.3	41.7	37.0	35.3	39.0	44.7	52.3	58.3	58.7	60.7	73.7	91.7	105.0	102.7	88.7	102.7	106.0	115.7	124.7	141.0	154.3	157.0	164.0	171.3	179.7	167.7	165.0	150.3	145.3	121.3		
D010	SOUTH KOREA	0.7	1.0	1.0	2.3	2.7	3.0	2.3	3.0	2.3	3.0	3.0	3.7	4.0	4.0	6.7	12.7	17.0	15.7	18.3	20.7	38.7	46.0	54.7	68.0	71.0	68.0	67.7	72.3	78.3	80.3	80.7	107.3	85.7	88.7	
	日本	1054.3	1058.3	1137.0	1144.7	1091.0	1085.7	1110.0	1155.7	1176.7	1228.0	1302.0	1316.0	1307.0	1540.0	1890.0	2226.7	2176.3	2197.7	2216.7	2416.3	2687.0	2847.0	3184.0	3271.3	3200.0	3176.7	3175.7	3237.7	3216.3	3188.0	3038.3	2883.3	2653.3	2423.0	

国コード	国名	1981	1982	1983	1984	1985	1986	1987	1988	1989	1990	1991	1992	1993	1994	1995	1996	1997	1998	1999	2000	2001	2002	2003	2004	2005	2006	2007	2008	2009	2010	2011	2012	2013	2014	2015
D001	USA	72.7	71.3	76.6	70.4	72.0	71.4	71.4	70.5	71.2	70.7	70.4	68.7	67.5	68.7	68.2	64.3	63.3	61.3	60.4	59.6	59.0	58.4	58.5	58.1	58.1	58.1	54.9	53.6	53.5	54.1	54.3	54.4	54.3	54.5	
D002	UK	2.7	3.1	3.1	3.1	2.7	3.2	3.2	3.3	3.3	3.3	3.3	3.5	3.9	4.2	4.0	4.3	4.7	5.1	5.1	5.0	5.3	5.9	6.1	6.4	6.4	6.9	7.1	7.2	7.4	7.6	7.6	7.4	7.4	7.4	
D003	JAPAN	41.2	38.9	40.0	42.1	39.8	39.8	39.7	37.4	39.3	40.7	39.9	41.0	44.0	50.0	58.7	117.1	110.5	128.0	124.8	158.4	147.7	132.3	238.4	197.0	239.3	186.0	189.0	142.3	188.3	195.1	189.3	138.9	154.7	172.2	176.0
D004	GERMANY	34.0	20.6	30.8	33.9	28.8	36.1	31.7	28.3	29.1	38.7	32.8	34.7	27.0	48.8	31.6	47.7	48.1	61.3	63.7	79.1	81.0	112.4	122.8	105.8	102.8	138.3	148.0	156.4	167.7	158.8	131.5	140.5	107.3	107.3	
D005	PEOPLES R CHINA	1.0	1.0	0.0	0.0	0.0	0.0	0.0	0.0	0.0	0.0	0.0	1.0	3.0	3.1	2.0	8.1	8.1	8.1	14.1	16.4	28.3	28.0	69.7	72.0	89.0	113.7	113.0	144.0	178.8	218.8	224.0	261.1	291.3	282.0	302.0
D006	FRANCE	19.6	22.6	17.4	21.6	24.1	22.6	19.4	16.2	20.1	24.4	30.8	39.8	43.0	25.9	36.7	45.4	46.0	50.8	35.2	40.4	39.6	41.0	37.4	63.8	66.0	81.2	61.0	67.3	62.5	69.8	77.3	69.3	70.9	61.5	47.7
D010	SOUTH KOREA	0.0	0.0	0.0	0.0	0.0	0.0	0.0	0.0	0.0	0.0	0.0	1.0	2.0	2.0	1.0	8.1	9.1	10.2	6.0	20.0	22.3	22.0	29.3	38.5	55.4	48.7	30.3	36.2	40.3	48.7	68.0	61.7	50.7	45.5	
	韓国	0.1	0.1	0.1	0.2	0.2	0.3	0.2	0.2	0.3	0.3	0.4	0.3	0.3	0.4	0.7	0.8	0.7	0.8	0.7	0.8	1.2	1.6	1.8	1.9	2.1	2.2	2.1	2.3	2.4	2.6	3.2	3.5	3.3	3.3	



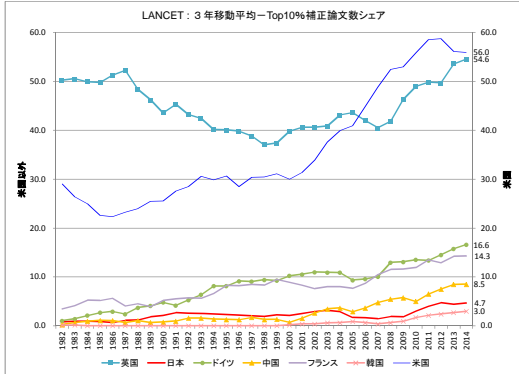
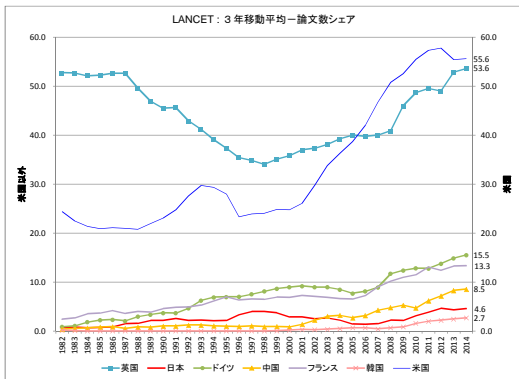
国コード	国名	1981	1982	1983	1984	1985	1986	1987	1988	1989	1990	1991	1992	1993	1994	1995	1996	1997	1998	1999	2000	2001	2002	2003	2004	2005	2006	2007	2008	2009	2010	2011	2012	2013	2014	2015
D001	USA	352.3	354.0	406.4	406.6	426.5	409.4	402.2	431.1	437.1	410.9	434.7	469.1	488.3	418.5	439.5	729.7	692.1	840.0	810.0	610.9	654.6	781.9	829.4	858.8	904.7	840.7	790.5	805.3	825.1	840.4	897.0	838.2	797.6	754.7	634.0
D002	UK	22.7	14.4	14.4	23.6	14.3	15.4	20.5	22.2	13.1	21.4	17.4	21.4	24.0	29.5	24.5	33.3	45.6	48.1	58.3	58.2	51.6	63.1	75.0	98.2	100.6	104.6	104.8	128.8	118.4	108.4	126.5	119.6	109.9	109.7	101.8
D003	JAPAN	41.2	38.9	40.0	42.1	39.8	39.8	39.7	37.4	39.3	40.7	39.9	41.0	44.0	50.0	58.7	117.1	110.5	128.0	124.8	158.4	147.7	132.3	238.4	197.0	239.3	186.0	189.0	142.3	188.3	195.1	189.3	138.9	154.7	172.2	176.0
D004	GERMANY	34.0	20.6	30.8	33.9	28.8	36.1	31.7	28.3	29.1	38.7	32.8	34.7	27.0	48.8	31.6	47.7	48.1	61.3	63.7	79.1	81.0	112.4	122.8	105.8	102.8	138.3	148.0	156.4	167.7	158.8	131.5	140.5	107.3	107.3	
D005	PEOPLES R CHINA	1.0	1.0	0.0	0.0	0.0	0.0	0.0	0.0	0.0	0.0	0.0	1.0	3.0	3.1	2.0	8.1	8.1	8.1	14.1	16.4	28.3	28.0	69.7	72.0	89.0	113.7	113.0	144.0	178.8	218.8	224.0	261.1	291.3	282.0	302.0
D006	FRANCE	19.6	22.6	17.4	21.6	24.1	22.6	19.4	16.2	20.1	24.4	30.8	39.8	43.0	25.9	36.7	45.4	46.0	50.8	35.2	40.4	39.6	41.0	37.4	63.8	66.0	81.2	61.0	67.3	62.5	69.8	77.3	69.3	70.9	61.5	47.7
D010	SOUTH KOREA	0.0	0.0	0.0	0.0	0.0	0.0	0.0	0.0	0.0	0.0	0.0	1.0	2.0	2.0	1.0	8.1	9.1	10.2	6.0	20.0	22.3	22.0	29.3	38.5	55.4	48.7	30.3	36.2	40.3	48.7	68.0	61.7	50.7	45.5	
	韓国	541.0	569.0	585.3	575.0	582.0	587.8	588.9	574.4	587.8	588.9	578.2	644.0	681.7	653.3	692.0	1091.0	1068.0	1023.0	895.7	1029.5	107														

参考資料4 特定ジャーナル分析に関する基礎データ

図表名 LANCET

LANCET：3年移動平均—論文数シェア
LANCET：3年移動平均—Top10%補正論文数シェア

英国以外
英国



図表名 LANCET

国コード	国名	1981	1982	1983	1984	1985	1986	1987	1988	1989	1990	1991	1992	1993	1994	1995	1996	1997	1998	1999	2000	2001	2002	2003	2004	2005	2006	2007	2008	2009	2010	2011	2012	2013	2014	2015
C001	USA	106	120	118	83	104	104	83	97	102	100	83	99	108	115	90	141	202	261	282	186	185	183	185	183	164	122	171	148	148	144	166	183	181	143	182
C002	UK	262	240	256	261	232	236	250	220	199	221	181	166	147	140	128	194	338	369	333	261	212	220	180	166	130	138	111	130	146	128	153	146	139	146	167
C003	JAPAN	3	3	4	1	1	1	1	1	1	1	1	1	1	1	1	1	1	1	1	1	1	1	1	1	1	1	1	1	1	1	1	1	1	1	1
C004	GERMANY	5	5	2	8	16	7	9	12	18	15	13	15	22	30	21	35	74	81	86	77	63	55	49	43	33	17	38	29	41	34	31	45	43	40	50
C005	PEOPLES R CHINA	1	4	0	3	0	2	4	1	4	3	4	5	4	4	3	31	39	32	8	9	8	14	21	14	12	7	19	18	11	15	13	25	24	22	22
C006	FRANCE	10	12	12	14	24	13	20	12	19	18	21	18	14	25	26	35	56	74	69	60	52	40	37	32	27	20	32	33	29	30	36	46	25	43	46
C010	SOUTH KOREA	1	1	0	0	0	0	0	0	0	0	0	0	0	0	0	0	0	0	0	0	0	0	0	0	0	0	0	0	0	0	0	0	0	0	0
全体		455	475	468	470	476	456	450	453	446	461	397	358	368	365	343	532	881	1000	1108	821	708	680	553	478	433	301	354	288	280	271	290	313	276	271	309

国コード	国名	1981	1982	1983	1984	1985	1986	1987	1988	1989	1990	1991	1992	1993	1994	1995	1996	1997	1998	1999	2000	2001	2002	2003	2004	2005	2006	2007	2008	2009	2010	2011	2012	2013	2014	2015
C001	USA	115.3	107.7	102.3	97.7	97.0	84.7	84.0	99.7	98.5	97.3	99.3	106.7	103.7	115.3	144.3	201.3	248.3	243.0	217.7	164.7	154.3	153.7	177.3	156.3	152.3	147.0	156.0	147.0	153.0	164.3	166.7	159.0	158.7		
C002	UK	248.3	232.3	248.7	244.0	242.0	228.0	224.7	213.3	192.7	178.3	154.7	147.7	138.3	124.0	213.3	383.3	351.7	344.0	314.3	262.0	231.0	207.0	191.7	161.7	144.0	123.7	126.7	128.7	134.3	142.0	141.3	151.7	153.0		
C003	JAPAN	3.3	3.7	3.0	3.3	3.7	6.7	7.0	9.7	8.0	10.0	7.7	8.0	7.3	8.7	20.7	33.7	40.7	36.0	25.3	29.3	15.3	14.9	10.7	5.7	5.0	4.7	6.7	6.0	8.7	11.0	13.3	12.3	13.0	16.0	
C004	GERMANY	4.0	5.0	8.7	10.3	10.7	8.3	13.3	15.3	17.3	14.3	16.7	24.3	28.7	43.3	63.3	83.7	84.7	78.7	65.0	55.3	46.7	41.3	31.0	29.3	26.0	34.7	35.0	36.7	39.7	42.7	44.3				
C005	PEOPLES R CHINA	1.1	2.3	3.0	3.7	4.0	2.3	3.7	3.7	4.3	4.3	4.3	4.3	4.3	4.3	4.3	4.3	4.3	4.3	4.3	4.3	4.3	4.3	4.3	4.3	4.3	4.3	4.3	4.3	4.3	4.3	4.3	4.3	4.3	4.3	
C006	FRANCE	11.3	12.7	16.7	17.0	19.0	16.0	18.0	17.3	15.0	16.0	17.7	19.0	21.7	28.7	38.0	55.0	66.3	67.7	60.3	51.3	43.7	37.0	32.0	28.3	26.3	28.3	31.3	30.7	31.7	37.3	53.0	58.0			
C010	SOUTH KOREA	0.7	0.7	0.0	0.0	0.0	0.0	0.0	0.0	0.0	0.0	0.0	0.0	0.0	0.0	0.0	0.0	0.0	0.0	0.3	1.3	2.0	1.7	2.0	2.3	2.7	2.3	1.3	2.0	2.3	4.3	5.7	6.3	7.0	7.7	
全体		472.7	478.7	470.0	467.3	469.7	452.0	453.0	464.7	459.3	459.3	459.3	459.3	459.3	459.3	459.3	459.3	459.3	459.3	459.3	459.3	459.3	459.3	459.3	459.3	459.3	459.3	459.3	459.3	459.3	459.3	459.3	459.3	459.3	459.3	

国コード	国名	1981	1982	1983	1984	1985	1986	1987	1988	1989	1990	1991	1992	1993	1994	1995	1996	1997	1998	1999	2000	2001	2002	2003	2004	2005	2006	2007	2008	2009	2010	2011	2012	2013	2014	2015
全体		24.4	22.5	21.4	20.9	21.1	20.0	20.8	21.8	23.1	24.7	27.6	28.7	28.3	28.0	23.3	25.0	24.0	24.8	24.1	25.8	23.8	23.8	23.8	23.8	23.8	23.8	23.8	23.8	23.8	23.8	23.8	23.8	23.8	23.8	23.8
英国		52.8	52.7	52.1	52.2	52.6	52.7	49.4	48.9	45.5	45.6	42.9	41.2	39.1	37.3	35.4	34.0	34.0	35.1	35.8	37.0	37.3	38.1	39.2	40.0	39.7	40.0	40.0	40.0	40.0	40.0	40.0	40.0	40.0	40.0	40.0
日本		0.7	0.8	0.8	0.8	0.8	0.8	0.8	0.8	0.8	0.8	0.8	0.8	0.8	0.8	0.8	0.8	0.8	0.8	0.8	0.8	0.8	0.8	0.8	0.8	0.8	0.8	0.8	0.8	0.8	0.8	0.8	0.8	0.8	0.8	0.8
ドイツ		0.8	1.0	1.8	2.2	2.3	2.1	2.9	3.4	3.7	3.6	4.6	6.2	6.9	7.0	7.0	7.5	8.1	8.6	9.0	9.2	8.9	9.0	8.5	7.7	8.1	8.0	11.7	12.4	12.8	12.8	13.8	14.9	15.5		
中国		0.4	0.5	0.6	0.8	0.7	0.8	0.8	0.7	1.0	1.0	1.2	1.0	1.0	0.8	0.8	0.8	0.8	0.8	0.8	0.8	0.8	0.8	0.8	0.8	0.8	0.8	0.8	0.8	0.8	0.8	0.8	0.8	0.8	0.8	0.8
フランス		2.4	2.6	3.5	3.6	4.1	3.8	4.0	3.8	4.3	4.7	6.3	8.3	8.7	8.0	8.0	8.0	8.0	8.0	8.0	8.0	8.0	8.0	8.0	8.0	8.0	8.0	8.0	8.0	8.0	8.0	8.0	8.0	8.0	8.0	8.0
韓国		0.1	0.1	0.0	0.0	0.0	0.0	0.0	0.0	0.0	0.0	0.0	0.0	0.0	0.0	0.0	0.0	0.0	0.0	0.0	0.0	0.0	0.0	0.0	0.0	0.0	0.0	0.0	0.0	0.0	0.0	0.0	0.0	0.0	0.0	0.0

国コード	国名	1981	1982	1983	1984	1985	1986	1987	1988	1989	1990	1991	1992	1993	1994	1995	1996	1997	1998	1999	2000	2001	2002	2003	2004	2005	2006	2007	2008	2009	2010	2011	2012	2013	2014	2015	
C001	USA	75.9	69.4	63.8	56.1	56.2	58.4	61.6	63.9	65.9	69.3	67.4	71.9	66.7	72.5	76.1	82.1	112.2	117.3	114.1	115.4	121.6	128.8	124.4	119.9	118.1	116.1	114.1	108.1	108.1	108.1	108.1	108.1	108.1	108.1		
C002	UK	129.6	131.6	138.4	129.0	115.6	128.4	143.8	122.2	104.7	130.2	166.1	105.9	84.0	97.3	77.3	109.3	132.1	124.4	149.5	150.3	158.4	142.5	138.2	138.2	128.1	88.6	113.4	108.4	115.3	140.0	128.1	140.5	135.1	161.6	163.6	
C003	JAPAN	2.0	1.0	3.0	3.0	1.0	2.0	2.0	4.0	3.1	7.1	8.1	7.1	5.1	5.1	6.0	5.1	6.0	6.0	6.0	6.0	6.0	6.0	6.0	6.0	6.0	6.0	6.0	6.0	6.0	6.0	6.0	6.0	6.0	6.0	6.0	6.0
C004	GERMANY	2.0	5.1	1.0	5.0	1.0	5.1	7.1	6.1	15.3	10.2	12.1	9.2	16.2	19.3	18.1	19.3	35.0	31.1	37.1	38.6	43.1	36.6	38.1	37.6	28.0	14.2	36.8	28.1	33.0	42.8	43.3	41.1	54.2			
C005	PEOPLES R CHINA	0.0	2.0	0.0	3.0	4.0	1.0	3.1	1.0	4.1	0.0	2.0	5.1	4.0	2.0	3.0	4.1	3.0	3.0	3.0	4.1	2.0	11.2	13.0	8.1	10.0	5.1	14.8	18.1	11.2	15.8	12.3	25.5	23.2	19.5	28.2	
C006	FRANCE	7.1	10.1	10.1	12.1	18.1	8.1	18.1	6.1	12.2	12.2	18.2	13.1	11.1	15.2	18.1	25.0	22.0	32.1	37.1	38.0	28.1	27.0	29.0	28.4	20.0	17.0	32.7	32.1	27.8	31.1	38.0	44.8	25.3	44.2	49.6	
C010	SOUTH KOREA	0.0	0.0	0.0	0.0	0.0	0.0	0.0	0.0	0.0	0.0	0.0	0.0	0.0	0.0	0.0	0.0	0.0	0.0	0.0	0.0	0.0	0.0	0.0	0.0	0.0	0.0	0.0	0.0	0.0	0.0	0.0	0.0	0.0	0.0	0.0	
全体		241.3	244.3	238.7	235.0	242.3	247.8	266.1	240.4	263.4	282.5	238.3	233.3	274.4	242.3	255.3	266.3	334.3	348.3	414.3	378.3	358.3	378.3	378.3	378.3	378.3	378.3	378.3	378.3	378.3	378.3	378.3	378.3	378.3	378.3		

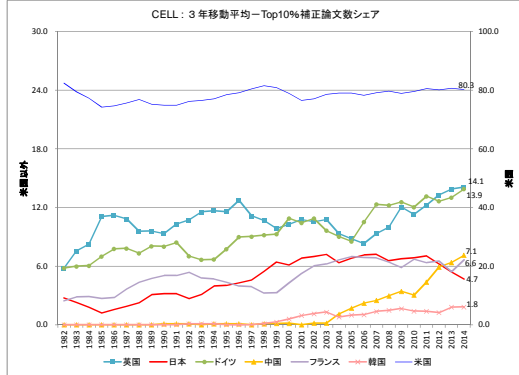
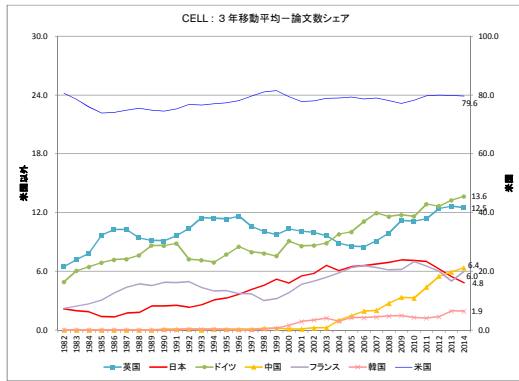
国コード	国名	1981	1982	1983	1984	1985	1986	1987	1988	1989	1990	1991	1992	1993	1994	1995	1996	1997	1998	1999	2000	2001	2002	2003	2004	2005	2006	2007	2008	2009	2010	2011	2012	2013	2014	2015
C001	USA	133.2	133.0	127.7	123.7	129.3	131.5	124.2	119.0	117.7	114.0	101.8	99.0	89.6	84.7	106.3	122.0	135.3	141.4	151.7	149.4															

参考資料4 特定ジャーナル分析に関する基礎データ

国名 CELL

CELL: 3年移動平均—論文数シェア
CELL: 3年移動平均—Top10%補正論文数シェア

米国以外
米国



国名 CELL

論文数

国名	1981	1982	1983	1984	1985	1986	1987	1988	1989	1990	1991	1992	1993	1994	1995	1996	1997	1998	1999	2000	2001	2002	2003	2004	2005	2006	2007	2008	2009	2010	2011	2012	2013	2014	2015
USA	323	322	340	300	301	312	326	324	380	356	37	34	372	338	374	353	347	340	297	268	276	273	219	227	255	279	283	271	275	241	280	335	333	356	350
UK	21	22	30	36	31	53	48	33	47	47	37	50	47	40	54	50	32	38	38	33	34	31	23	23	20	24	28	30	43	38	32	32	31	47	53
JAPAN	8	9	13	6	4	7	8	9	9	10	10	9	13	13	17	18	18	21	19	20	14	24	19	17	19	21	20	21	20	20	32	22	19	25	
GERMANY	15	22	23	29	28	28	35	30	37	53	34	38	30	31	38	39	42	23	20	31	35	24	26	31	30	35	50	41	32	47	38	52	59	59	60
PEOPLES R CHINA	0	0	0	0	0	0	0	0	0	0	0	0	0	0	0	0	1	0	0	1	0	0	1	1	0	0	0	0	0	0	0	0	0	0	0
FRANCE	7	10	10	13	15	20	21	22	20	28	19	21	19	20	15	13	8	14	18	17	14	18	20	23	25	19	21	23	27	20	24	20	34	34	
SOUTH KOREA	0	0	0	0	0	0	0	0	0	0	0	0	0	0	0	0	0	0	0	0	0	0	0	0	0	0	0	0	0	0	0	0	0	0	0
世界	380	390	433	401	409	430	433	423	462	462	475	420	480	448	478	451	448	407	348	348	354	350	281	281	326	352	380	342	339	340	338	415	424	438	437

3年移動平均—論文数

国名	1981	1982	1983	1984	1985	1986	1987	1988	1989	1990	1991	1992	1993	1994	1995	1996	1997	1998	1999	2000	2001	2002	2003	2004	2005	2006	2007	2008	2009	2010	2011	2012	2013	2014	2015
USA	328.3	320.7	313.7	304.3	315.0	320.7	335.7	345.7	357.7	349.0	354.3	347.3	350.7	354.3	358.0	346.7	324.7	298.3	277.0	272.3	256.0	239.7	233.7	233.7	277.7	276.3	262.3	265.3	285.3	316.0	341.3	346.3	343.0		
UK	26.3	28.3	29.3	40.0	43.0	44.0	42.0	42.3	43.7	44.7	46.0	52.0	53.3	52.0	53.3	46.0	40.3	35.7	36.0	35.3	32.7	26.3	26.3	27.3	28.3	32.0	35.0	38.0	37.7	40.7	40.0	54.0	54.3	54.3	
JAPAN	8.7	8.0	7.7	5.7	5.7	7.3	8.0	11.3	11.7	11.7	10.7	11.7	14.3	15.0	16.7	19.0	19.3	19.0	16.7	19.3	19.0	20.0	18.0	20.7	22.7	23.7	24.3	24.0	25.0	24.7	23.3	21.0	21.7	21.7	
GERMANY	20.0	24.7	26.7	28.3	30.3	31.0	34.0	40.0	41.0	33.3	32.3	32.3	30.3	30.3	34.7	31.3	27.7	31.7	30.0	28.3	27.0	29.0	29.0	38.3	42.0	41.0	40.0	39.3	46.0	50.0	56.7	59.3	59.3	59.3	
PEOPLES R CHINA	0.0	0.0	0.0	0.0	0.0	0.0	0.0	0.0	0.0	0.0	0.0	0.0	0.0	0.0	0.0	0.0	0.0	0.0	0.0	0.0	0.0	0.0	0.0	0.0	0.0	0.0	0.0	0.0	0.0	0.0	0.0	0.0	0.0	0.0	0.0
FRANCE	9.0	10.0	11.0	12.7	16.0	18.7	21.0	21.0	23.3	22.3	22.7	19.7	18.7	18.3	17.0	16.0	12.0	11.7	13.3	16.3	16.3	16.3	17.3	20.3	22.7	22.3	21.7	21.0	23.7	23.3	23.7	21.3	26.0	26.0	
SOUTH KOREA	0.0	0.0	0.0	0.0	0.0	0.0	0.0	0.0	0.0	0.0	0.0	0.0	0.0	0.0	0.0	0.0	0.0	0.0	0.0	0.0	0.0	0.0	0.0	0.0	0.0	0.0	0.0	0.0	0.0	0.0	0.0	0.0	0.0	0.0	0.0
世界	407.0	408.0	413.0	412.0	422.7	428.7	446.0	463.3	460.0	458.3	461.7	453.7	463.0	468.3	463.0	463.0	463.0	463.0	463.0	463.0	463.0	463.0	463.0	463.0	463.0	463.0	463.0	463.0	463.0	463.0	463.0	463.0	463.0	463.0	463.0

3年移動平均—論文数シェア

国名	1981	1982	1983	1984	1985	1986	1987	1988	1989	1990	1991	1992	1983	1984	1985	1986	1987	1988	1989	1990	2000	2001	2002	2003	2004	2005	2006	2007	2008	2009	2010	2011	2012	2013	2014	2015	
米国	80.7	78.5	75.9	73.9	74.1	74.8	75.3	74.8	74.5	75.3	76.8	76.6	77.1	77.3	78.2	79.6	81.1	81.4	79.4	78.8	78.0	78.8	78.8	79.4	79.4	79.4	79.4	79.4	79.4	79.4	79.4	79.4	79.4	79.4	79.4	79.4	
英国	6.5	7.2	7.8	9.7	10.3	9.4	9.1	9.1	9.6	10.4	11.5	11.4	11.3	11.6	10.6	10.7	9.7	10.3	10.1	9.9	9.8	8.9	8.6	8.5	9.1	9.9	9.8	9.8	8.5	9.1	9.9	11.2	11.1	11.4	12.4	12.6	12.5
日本	2.1	2.0	1.9	1.4	1.3	1.1	1.3	2.4	2.4	2.5	2.3	2.6	3.1	3.3	3.6	4.1	4.6	5.2	4.8	5.3	6.6	6.1	6.5	6.6	6.1	6.5	6.6	6.1	6.5	7.1	7.1	7.0	6.2	6.5	6.6		
ドイツ	4.9	6.0	6.5	6.9	7.2	7.2	7.8	8.8	8.8	8.8	7.2	7.1	6.9	7.7	8.5	8.0	7.8	9.1	8.6	8.6	8.9	8.8	10.0	11.1	12.0	11.8	11.8	11.8	12.9	12.7	13.3	13.6	13.6	13.6	13.6		
中国	0.0	0.0	0.0	0.0	0.0	0.0	0.0	0.0	0.0	0.0	0.0	0.0	0.0	0.0	0.0	0.0	0.0	0.0	0.0	0.0	0.0	0.0	0.0	0.0	0.0	0.0	0.0	0.0	0.0	0.0	0.0	0.0	0.0	0.0	0.0	0.0	
フランス	1.2	1.2	1.2	1.1	1.1	1.1	1.1	1.1	1.1	1.1	1.1	1.1	1.1	1.1	1.1	1.1	1.1	1.1	1.1	1.1	1.1	1.1	1.1	1.1	1.1	1.1	1.1	1.1	1.1	1.1	1.1	1.1	1.1	1.1	1.1	1.1	
韓国	0.0	0.0	0.0	0.0	0.0	0.0	0.0	0.0	0.0	0.0	0.0	0.0	0.0	0.0	0.0	0.0	0.0	0.0	0.0	0.0	0.0	0.0	0.0	0.0	0.0	0.0	0.0	0.0	0.0	0.0	0.0	0.0	0.0	0.0	0.0	0.0	

論文Top10%

国名	1981	1982	1983	1984	1985	1986	1987	1988	1989	1990	1991	1992	1983	1984	1985	1986	1987	1988	1989	1990	2000	2001	2002	2003	2004	2005	2006	2007	2008	2009	2010	2011	2012	2013	2014	2015	
USA	155.2	168.6	209.1	185.3	171.3	197.8	199.8	205.5	247.7	239.2	253.1	239.0	259.2	290.1	255.0	298.4	247.1	218.6	193.2	198.1	169.8	169.4	189.0	174.0	182.0	205.3	200.0	215.3	216.0	193.2	219.8	284.4	279.2	300.2	284.4		
UK	11.0	13.0	14.1	28.0	20.0	36.1	29.1	21.0	31.1	35.2	25.2	38.1	41.4	32.1	42.2	38.2	42.0	20.1	24.0	29.2	18.1	25.1	22.1	19.2	18.2	25.0	21.2	29.3	31.3	35.0	46.1	58.3	41.9	52.4			
JAPAN	3.0	3.0	3.0	3.0	3.0	3.0	3.0	3.1	3.1	3.1	3.1	3.1	3.1	3.1	3.1	3.1	3.1	3.1	3.1	3.1	3.1	3.1	3.1	3.1	3.1	3.1	3.1	3.1	3.1	3.1	3.1	3.1	3.1	3.1	3.1	3.1	
GERMANY	11.0	14.0	15.0	16.0	21.1	22.1	19.0	21.1	33.2	24.2	23.1	21.2	20.1	25.1	30.2	31.0	20.1	23.0	22.2	28.1	18.0	23.2	18.1	16.2	26.0	30.4	34.4	36.0	39.0	41.1	46.1	48.3	46.0	56.7			
PEOPLES R CHINA	0.0	0.0	0.0	0.0	0.0	0.0	0.0	0.0	0.0	0.0	0.0	0.0	0.0	0.0	0.0	0.0	0.0	0.0	0.0	0.0	0.0	0.0	0.0	0.0	0.0	0.0	0.0	0.0	0.0	0.0	0.0	0.0	0.0	0.0	0.0	0.0	
FRANCE	3.0	6.0	7.0	7.0	7.0	8.0	15.0	14.0	14.1	21.2	13.0	18.2	15.1	15.1	14.1	11.0	10.1	8.1	15.1	10.0	12.1	16.1	14.2	19.0	20.2	16.2	16.1	14.0	23.1	19.0	22.8	17.4	32.1	17.4	32.1		
SOUTH KOREA	0.0	0.0	0.0	0.0	0.0	0.0	0.0	0.0	0.0	0.0	0.0	0.0	0.0	0.0	0.0	0.0	0.0	0.0	0.0	0.0	0.0	0.0	0.0	0.0	0.0	0.0	0.0	0.0	0.0	0.0	0.0	0.0	0.0	0.0	0.0	0.0	
世界	218.2	234.5	248.1	248.0	253.9	285.8	283.2	303.9	326.8	318.8	324.9	322.1	330.3	343.3	303.3	329.9	289.4	248.9	218.2	217.7	208.3	208.9	212.9	213.0	213.5	214.3	208.7	232.8	285.4	277.8	287.1	275.8	292.9	288.0	349.5	340.4	360.0

3年移動平均—論文Top10%

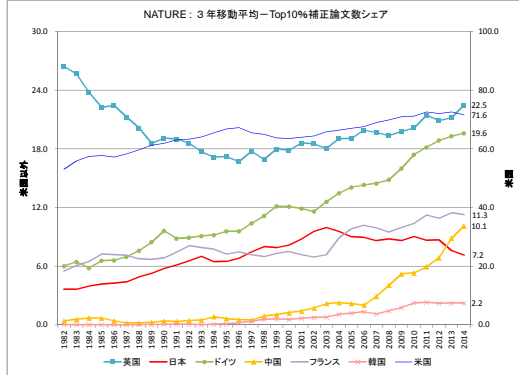
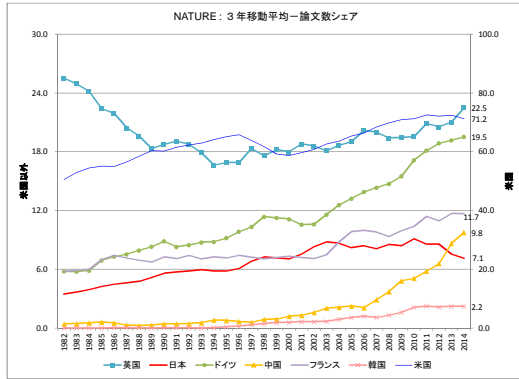
国名	1981	1982	1983	1984	1985	1986	1987	1988	1989	1990	1991	1992	1983	1984	1985	1986	1987	1988	1989	1990	2000	2001	2002	2003	2004	2005	2006	2007	2008	2009	2010	2011	2012	2013	2014	2015
USA	159.3	185.3	197.9	184.2	188.1	201.0	217.7	228.9	244.4	239.9	247.7	246.7	249.9	254.9	258.6	241.4	219.8	190.1	172.4	162.1	159.1	161.9	167.8	186.8	202.4	218.1	217.4									

参考資料4 特定ジャーナル分析に関する基礎データ

図表名 NATURE

NATURE: 3年移動平均—論文数シェア
NATURE: 3年移動平均—Top10%補正論文数シェア

米国以外
米国



図表名 NATURE

国コード	国名	1981	1982	1983	1984	1985	1986	1987	1988	1989	1990	1991	1992	1993	1994	1995	1996	1997	1998	1999	2000	2001	2002	2003	2004	2005	2006	2007	2008	2009	2010	2011	2012	2013	2014	2015	
D001	USA	674	689	652	664	662	623	667	683	622	663	612	655	618	582	633	579	606	668	662	758	707	676	609	609	678	633	578	643	605	619	605	640	609	630	630	
D002	UK	363	345	325	280	278	237	268	209	184	200	201	191	173	161	141	166	168	168	168	200	218	208	184	157	121	168	171	164	166	176	174	187	167	161	181	222
D003	JAPAN	40	49	50	49	50	56	49	54	57	57	62	60	54	61	51	46	60	70	69	93	86	92	94	79	69	77	77	64	60	70	66	70	66	75	54	56
D004	GERMANY	84	80	68	71	74	89	86	78	103	90	86	84	88	88	78	87	107	96	131	146	115	118	114	118	142	129	125	135	129	148	167	151	167	179	165	
D005	PEOPLES R CHINA	7	2	3	3	4	5	1	2	1	1	1	1	1	1	1	1	1	1	1	1	1	1	1	1	1	1	1	1	1	1	1	1	1	1	1	
D006	FRANCE	82	85	63	78	78	93	82	65	76	78	74	70	80	58	69	70	66	67	74	97	87	74	71	81	110	98	78	92	76	80	88	102	81	120	105	
D010	SOUTH KOREA	0	0	0	0	0	0	0	0	0	0	0	0	0	0	0	0	0	0	0	0	0	0	0	0	0	0	0	0	0	0	0	0	0	0	0	
	世界	1392	1349	1367	1192	1176	1166	1209	1119	1044	1102	1092	1033	889	926	943	895	938	997	1016	1315	1192	1063	1007	937	1045	953	843	907	894	892	841	869	862	901		

国コード	国名	1981	1982	1983	1984	1985	1986	1987	1988	1989	1990	1991	1992	1993	1994	1995	1996	1997	1998	1999	2000	2001	2002	2003	2004	2005	2006	2007	2008	2009	2010	2011	2012	2013	2014	2015
D001	USA	674.7	671.3	659.3	649.7	650.7	657.7	657.3	656.0	632.5	643.3	629.3	616.3	611.0	598.0	606.0	597.0	604.7	655.3	689.0	713.7	663.7	631.0	631.7	640.7	630.3	618.7	608.7	622.3	610.0	621.7	618.0	626.0	622.7		
D002	UK	341.0	316.7	293.0	263.7	259.7	238.0	220.3	199.3	166.7	169.7	160.0	176.3	163.3	155.0	155.7	171.7	172.4	201.3	211.3	225.0	200.0	182.3	165.3	166.7	161.4	161.0	169.0	170.7	167.3	176.0	176.0	181.7	166.7		
D003	JAPAN	46.9	46.3	47.3	50.0	50.0	53.7	53.3	56.0	56.7	59.7	59.7	59.7	59.7	59.7	59.7	59.7	59.7	59.7	59.7	59.7	59.7	59.7	59.7	59.7	59.7	59.7	59.7	59.7	59.7	59.7	59.7	59.7	59.7	59.7	
D004	GERMANY	77.3	73.0	71.0	81.3	86.3	87.7	89.0	90.3	90.3	86.7	82.3	86.3	84.0	84.3	80.7	86.7	111.3	124.3	130.7	126.3	115.3	116.7	124.7	129.7	120.7	126.3	136.0	146.7	159.3	161.7	167.7	150.7			
D005	PEOPLES R CHINA	7	2	3	3	4	5	1	2	1	1	1	1	1	1	1	1	1	1	1	1	1	1	1	1	1	1	1	1	1	1	1	1	1	1	
D006	FRANCE	76.7	74.7	72.3	82.3	87.7	83.3	77.7	73.0	76.0	74.0	74.7	69.3	69.0	65.7	68.3	67.7	69.0	79.3	86.0	86.0	77.3	75.3	67.3	66.3	94.7	88.7	81.3	87.0	89.0	87.7	85.7	101.0	102.0		
D010	SOUTH KOREA	0	0	0	0	0	0	0	0	0	0	0	0	0	0	0	0	0	0	0	0	0	0	0	0	0	0	0	0	0	0	0	0	0	0	
	世界	1392.0	1293.3	1211.7	1117.7	1116.3	1164.3	1163.7	1083.0	1046.3	1045.7	1045.7	1000.0	882.7	852.7	916.0	921.3	926.0	976.7	1063.0	1174.3	1196.7	1092.0	1007.0	957.0	961.0	946.7	945.3	971.3	977.7	957.7	957.3	959.7	957.3	974.3	

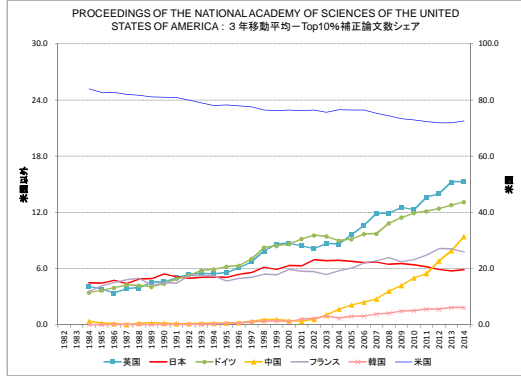
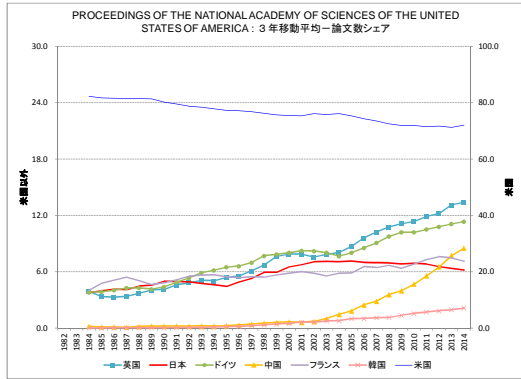
国コード	国名	1981	1982	1983	1984	1985	1986	1987	1988	1989	1990	1991	1992	1993	1994	1995	1996	1997	1998	1999	2000	2001	2002	2003	2004	2005	2006	2007	2008	2009	2010	2011	2012	2013	2014	2015
D001	USA	50.5	52.9	54.4	55.2	55.0	56.5	55.5	60.3	60.3	60.3	61.5	62.2	62.9	64.1	65.1	66.6	63.6	61.7	69.2	59.6	60.8	62.7	63.6	65.3	66.4	66.4	66.9	70.9	71.3	72.5	72.1	72.9	71.2		
D002	UK	22.5	24.9	24.2	22.4	22.4	20.4	19.4	18.3	17.7	19.1	18.8	17.9	16.6	16.9	16.6	16.6	16.6	16.6	16.6	16.6	16.6	16.6	16.6	16.6	16.6	16.6	16.6	16.6	16.6	16.6	16.6	16.6	16.6	16.6	16.6
D003	JAPAN	21.3	19.2	19.2	24.2	27.3	29.3	28.3	34.3	42.3	35.3	41.3	33.3	44.3	50.4	40.3	44.3	61.3	58.3	59.3	73.3	54.3	61.3	63.3	70.3	75.3	75.3	87.3	88.3	81.3	81.3	81.3	81.3	81.3	81.3	81.3
D004	GERMANY	30.4	42.3	33.2	34.3	34.3	50.4	47.4	48.3	67.4	68.3	67.7	55.5	66.4	70.5	73.5	76.4	75.5	95.4	102.4	109.4	92.0	96.6	93.8	99.4	123.0	111.3	103.7	114.3	114.3	143.7	161.1	167.2	158.5		
D005	PEOPLES R CHINA	4.0	2.0	1.0	7.0	5.1	1.0	2.0	1.0	1.0	1.1	4.0	1.0	1.1	5.0	7.0	1.0	3.0	7.0	10.1	8.1	13.2	15.2	14.1	21.2	18.1	12.1	17.1	37.1	36.1	46.2	38.0	38.3	30.0	60.5	
D006	FRANCE	39.4	32.4	28.3	30.3	43.0	46.3	53.4	45.3	42.3	39.6	39.6	44.4	44.3	55.4	55.4	53.4	51.4	52.3	73.0	64.0	49.4	65.0	60.0	61.0	60.0	68.1	78.1	68.1	84.7	89.0	85.0	97.1	105.0	83.0	
D010	SOUTH KOREA	0.0	0.0	0.0	0.0	0.0	0.0	0.0	0.0	0.0	0.0	0.0	0.0	0.0	0.0	0.0	0.0	0.0	0.0	0.0	0.0	0.0	0.0	0.0	0.0	0.0	0.0	0.0	0.0	0.0	0.0	0.0	0.0	0.0	0.0	
	世界	58.9	61.0	62.8	64.5	64.5	66.5	66.5	69.1	71.1	71.4	70.1	71.3	70.6	70.4	69.0	69.9	71.0	75.7	78.1	81.0	87.7	87.7	87.7	87.7	87.7	87.7	87.7	87.7	87.7	87.7	87.7	87.7	87.7	87.7	

国コード	国名	1981	1982	1983	1984	1985	1986	1987	1988	1989	1990	1991	1992	1993	1994	1995	1996	1997	1998	1999	2000	2001	2002	2003	2004	2005	2006	2007	2008	2009	2010	2011	2012	2013	2014	2015
D001	USA	289.1	318.0	319.2	397.0	377.5	354.8	410.3	457.3	416.6	450.7	435.0	470.1	438.8	449.5	482.0	460.0	490.1	487.6	477.4	589.1	551.3	571.1	496.4	499.4	566.0	508.1	503.2	554.0	524.6	570.2	561.1	604.1	574.4	599.9	
D002	UK	149.1	163.7	152.2	154.3	143.0	133.3	171.8	141.1	119.8	139.8	141.6	127.1	128.0	120.0	111.8	126.0	120.7	145.4	116.8	126.8	161.6	149.3	144.3	123.8	177.8	149.3	144.0	158.0	151.1	166.0	169.4	178.9	157.2	182.0	
D003	JAPAN	21.3	19.2	19.2	24.2	27.3	29.3	28.3	34.3	42.3	35.3	41.3	33.3	44.3	50.4	40.3	44.3	61.3	58.3	59.3	73.3	54.3	61.3	63.3	70.3	75.3	75.3	87.3	88.3	81.3	81.3	81.3	81.3	81.3	81.3	
D004	GERMANY	30.4	42.3	33.2	34.3	34.3	50.4	47.4	48.3	67.4	68.3	67.7	55.5	66.4	70.5	73.5	76.4	75.5	95.4	102.4	109.4	92.0	96.6	93.8	99.4	123.0	111.3	103.7	114.3	114.3	143.7	161.1	167.2	158.5		
D005	PEOPLES R CHINA	4.0	2.0	1.0	7.0	5.1	1.0	2.0	1.0	1.0	1.1	4.0	1.0	1.1	5.0	7.0	1.0	3.0	7.0	10.1	8.1	13.2	15.2	14.1	21.2	18.1	12.1	17.1	37.1	36.1	46.2	38.0	38.3	30.0		
D006	FRANCE	39.4	32.4	28.3	30.3	43.0	46.3	53.4	45.3	42.3	39.6	39.6	44.4	44.3	55.4	55.4	53.4	51.4	52.3	73.0	64.0	49.4	65.0	60.0	61.0	60.0	68.1	78.1	68.1	84.7	89.0	85.0	97.1	105.0	83.0	
D010	SOUTH KOREA	0.0	0.0	0.0	0.0	0.0	0.0	0.0	0.0	0.0	0.0	0.0	0.0	0.0	0.0	0.0	0.0	0.0	0.0	0.0	0.0	0.0	0.0	0.0	0.0	0.0	0.0	0.0	0.0	0.0	0.0	0.0	0.0	0.0	0.0	
	世界	589.1	649.0	649.0	819.0	799.0	819.0	919.0	999.0	919.0	999.0	919.0	999.0	919.0	999.0	1019.0	999.0	1019.0	1019.0	1019.0	1019.0	1019.0	1019.0	1019.0	1019.0	1019.0	1019.0	1019.0	1019.0	1019.0	1019.0	1019.0	1019.0	1019.0	1019.0	

国コード	国名	1981	1982	1983	1984	1985	1986	1987	1988	1989	1990	1991
------	----	------	------	------	------	------	------	------	------	------	------	------

参考資料4 特定ジャーナル分析に関する基礎データ

図表名 PROCEEDINGS OF THE NATIONAL ACADEMY OF SCIENCES OF THE UNITED STATES OF AMERICA : 米国以外
PROCEEDINGS OF THE NATIONAL ACADEMY OF SCIENCES OF AMERICA



図表名 PROCEEDINGS OF THE NATIONAL ACADEMY OF SCIENCES OF THE UNITED STATES OF AMERICA

国コード	国名	1982	1983	1984	1985	1986	1987	1988	1989	1990	1991	1992	1993	1994	1995	1996	1997	1998	1999	2000	2001	2002	2003	2004	2005	2006	2007	2008	2009	2010	2011	2012	2013	2014	2015
C001	USA	0	0	0	1518	1659	1568	1669	1699	1671	1880	1983	1905	2035	1945	2137	2030	2080	1968	1886	2177	2117	2318	2429	2472	2534	2572	2703	2673	2644	2675	2705	2758	2791	
C002	UK	0	0	0	0	74	58	39	58	73	88	106	128	119	136	146	150	181	203	214	190	226	206	251	261	310	377	362	418	447	380	483	488	500	455
C003	JAPAN	0	0	0	0	69	86	61	74	109	100	117	129	115	116	120	152	150	161	140	192	197	230	219	236	246	251	260	290	290	291	299	297	297	297
C004	GERMANY	0	0	0	70	80	84	92	82	83	121	135	134	178	153	182	185	200	227	187	202	268	203	228	259	282	314	340	398	390	351	434	437	380	405
C005	PEOPLES R CHINA	0	0	0	0	0	0	1	4	3	2	3	4	6	9	17	13	13	15	18	17	13	21	41	51	71	118	104	151	174	168	262	289	319	358
C006	FRANCE	0	0	0	74	111	111	103	90	83	131	132	141	152	134	144	155	130	158	161	160	158	165	201	194	258	211	244	258	267	287	287	249	230	243
C010	SOUTH KOREA	0	0	0	0	0	0	0	0	0	0	0	0	0	0	0	0	0	0	0	0	0	0	0	0	0	0	0	0	0	0	0	0	0	0
	世界	0	0	0	1846	2048	1925	2037	2090	2080	2382	2502	2435	2822	2502	2790	2627	2719	2690	2590	2379	2411	2725	3084	3206	3306	3494	3511	3761	3414	3933	3902	3938	3931	

国コード	国名	1982	1983	1984	1985	1986	1987	1988	1989	1990	1991	1992	1993	1994	1995	1996	1997	1998	1999	2000	2001	2002	2003	2004	2005	2006	2007	2008	2009	2010	2011	2012	2013	2014	2015
C001	USA	0.0	0.0	0.0	596.0	1099.0	1581.0	1831.4	1644.7	1679.7	1750.0	1844.7	1922.7	1974.3	1962.3	2039.7	2038.0	2082.3	2022.7	1974.7	1934.7	2007.7	2084.7	2204.0	2268.0	2406.7	2478.7	2526.3	2603.0	2648.2	2673.3	2684.0	2704.7	2852.0	2587.3
C002	UK	0.0	0.0	24.0	43.4	43.0	47.7	74.7	83.7	90.0	106.3	117.3	127.7	148.7	141.7	148.3	165.0	179.0	199.0	202.0	209.7	207.3	227.7	241.3	278.0	320.0	361.7	388.0	409.3	421.7	445.0	460.0	483.7	481.0	
C003	JAPAN	0.0	0.0	23.0	31.0	40.0	41.7	49.7	44.0	108.3	114.3	119.0	115.3	117.0	120.0	145.1	157.0	155.0	165.3	179.3	193.0	205.7	211.7	230.0	232.7	238.3	249.0	260.7	265.7	254.3	245.3	238.7	229.7	229.7	227.0
C004	GERMANY	0.0	0.0	23.3	30.0	37.0	41.0	44.0	44.0	85.3	86.0	85.7	85.3	113.0	130.0	171.0	174.0	189.0	204.0	204.7	205.3	219.0	226.3	233.0	230.0	268.3	290.0	297.0	317.0	379.0	381.7	407.3	417.0	407.3	407.3
C005	PEOPLES R CHINA	0.0	0.0	1.0	1.0	2.0	1.0	3.0	4.0	2.0	1.0	1.0	1.0	2.0	4.0	8.0	3.0	11.0	13.0	16.0	16.0	16.0	19.0	39.0	57.0	88.0	98.0	146.0	129.0	207.0	247.0	280.0	305.0	305.0	
C006	FRANCE	0.0	0.0	24.7	41.7	48.7	108.3	101.3	95.3	104.7	118.7	134.7	141.7	142.3	143.3	140.7	147.7	143.0	147.7	147.7	159.7	150.7	161.0	174.7	188.7	217.7	221.0	240.0	233.7	252.3	271.0	280.0	251.0	255.3	
C010	SOUTH KOREA	0.0	0.0	0.0	0.0	0.0	0.0	0.0	0.0	0.0	0.0	0.0	0.0	0.0	0.0	0.0	0.0	0.0	0.0	0.0	0.0	0.0	0.0	0.0	0.0	0.0	0.0	0.0	0.0	0.0	0.0	0.0	0.0	0.0	
	世界	0.0	0.0	615.3	1248.3	1838.0	2001.7	2017.3	2065.0	2160.0	2317.8	2438.7	2519.7	2519.7	2638.0	2629.3	2711.0	2650.7	2610.0	2546.3	2689.0	2728.3	2826.7	3009.0	3166.7	3333.3	3487.0	3590.0	3688.3	3747.7	3727.3	3730.0	3784.3	3599.3	

国コード	国名	1982	1983	1984	1985	1986	1987	1988	1989	1990	1991	1992	1993	1994	1995	1996	1997	1998	1999	2000	2001	2002	2003	2004	2005	2006	2007	2008	2009	2010	2011	2012	2013	2014	2015
C001	USA	0.0	0.0	0.0	0.0	0.0	0.0	0.0	0.0	0.0	0.0	0.0	0.0	0.0	0.0	0.0	0.0	0.0	0.0	0.0	0.0	0.0	0.0	0.0	0.0	0.0	0.0	0.0	0.0	0.0	0.0	0.0	0.0	0.0	
C002	UK	0.0	0.0	3.9	3.3	3.3	3.4	3.7	4.1	4.1	4.6	4.5	5.1	5.0	5.4	5.5	6.1	6.3	7.4	7.9	7.6	7.9	7.6	7.8	8.0	8.7	9.6	10.2	10.6	11.1	11.4	11.9	12.2	13.1	13.4
C003	JAPAN	0.0	0.0	3.1	3.3	4.1	4.1	4.4	4.6	5.0	4.9	4.7	4.6	4.4	4.5	5.1	5.2	6.5	6.7	7.0	7.1	7.0	7.1	7.0	7.1	7.0	8.1	8.1	8.1	8.1	8.1	8.1	8.1	8.1	
C004	GERMANY	0.0	0.0	3.8	3.9	4.0	4.3	4.3	4.1	4.4	4.9	5.3	5.9	6.2	6.5	6.6	7.0	7.7	7.8	8.0	8.2	8.2	8.0	7.7	8.0	8.6	9.1	10.2	10.2	10.5	10.8	11.1	11.3	11.3	
C005	PEOPLES R CHINA	0.0	0.0	0.1	0.1	0.1	0.1	0.2	0.2	0.2	0.2	0.2	0.2	0.2	0.3	0.4	0.4	0.4	0.4	0.4	0.4	0.4	0.4	0.4	0.4	0.4	0.4	0.4	0.4	0.4	0.4	0.4	0.4	0.4	
C006	FRANCE	0.0	0.0	4.0	4.4	5.1	5.4	5.0	4.6	4.9	7.1	8.5	9.6	9.4	9.4	9.4	9.4	9.4	9.4	9.4	9.4	9.4	9.4	9.4	9.4	9.4	9.4	9.4	9.4	9.4	9.4	9.4	9.4	9.4	
C010	SOUTH KOREA	0.0	0.0	0.0	0.0	0.0	0.0	0.0	0.0	0.0	0.0	0.0	0.0	0.0	0.0	0.0	0.0	0.0	0.0	0.0	0.0	0.0	0.0	0.0	0.0	0.0	0.0	0.0	0.0	0.0	0.0	0.0	0.0	0.0	
	世界	0.0	0.0	0.0	0.0	0.0	0.0	0.0	0.0	0.0	0.0	0.0	0.0	0.0	0.0	0.0	0.0	0.0	0.0	0.0	0.0	0.0	0.0	0.0	0.0	0.0	0.0	0.0	0.0	0.0	0.0	0.0	0.0		

国コード	国名	1982	1983	1984	1985	1986	1987	1988	1989	1990	1991	1992	1993	1994	1995	1996	1997	1998	1999	2000	2001	2002	2003	2004	2005	2006	2007	2008	2009	2010	2011	2012	2013	2014	2015
C001	USA	0.0	0.0	0.0	985.0	1760.4	6871.1	7343.0	7462.0	7207.0	8440.0	8101.0	7497.0	8705.0	788.0	962.0	839.0	819.0	869.0	889.0	897.4	937.4	953.5	971.2	1093.0	1099.0	1139.0	1202.5	1188.3	1281.1	1297.0	1251.1	1308.2	1329.3	1286.0
C002	UK	0.0	0.0	0.0	32.4	33.3	21.2	48.4	35.3	39.5	55.6	52.3	54.3	61.0	50.3	73.5	77.3	85.8	108.5	107.3	88.5	110.2	104.9	121.8	115.0	185.0	181.0	188.3	195.4	246.3	204.2	277.0	276.8	267.2	219.0
C003	JAPAN	0.0	0.0	0.0	38.0	41.3	44.3	37.3	32.3	48.3	52.3	49.3	47.3	58.4	50.3	59.3	68.3	88.4	79.3	69.3	80.4	80.3	85.3	88.3	88.3	107.1	107.1	103.0	111.8	113.3	105.2	104.4	108.3	94.1	91.3
C004	GERMANY	0.0	0.0	0.0	0.0	27.4	37.2	39.4	34.1	38.4	54.5	52.6	52.3	73.6	55.3	75.4	84.5	113.3	108.0	97.5	144.2	112.9	109.7	133.0	140.3	157.4	155.3	154.3	194.3	238.9	235.2	213.2	208.8	208.8	
C005	PEOPLES R CHINA	0.0	0.0	0.0	0.0	0.0	0.0	0.0	0.0	4.0	1.0	2.0	1.0	2.0	2.0	3.0	8.1	7.0	4.0	4.0	4.0	4.0	4.0	4.0	4.0	4.0	4.0	4.0	4.0	4.0	4.0	4.0	4.0	4.0	
C006	FRANCE	0.0	0.0	0.0	29.3	43.4	43.4	41.4	46.2	27.3	53.6	49.3	55.3	86.4	49.3	57.2	64.4	62.4	59.2	69.4	69.6	78.1	81.7	94.0	117.0	108.3	128.2	109.6	128.9	159.2	151.9				

参考資料4 特定ジャーナル分析に関する基礎データ

表16 BIOLOGICAL PSYCHIATRY 3年移動平均—論文数シェア 米国以外
BIOLOGICAL PSYCHIATRY : 3年移動平均—Top10%補正論文数米国

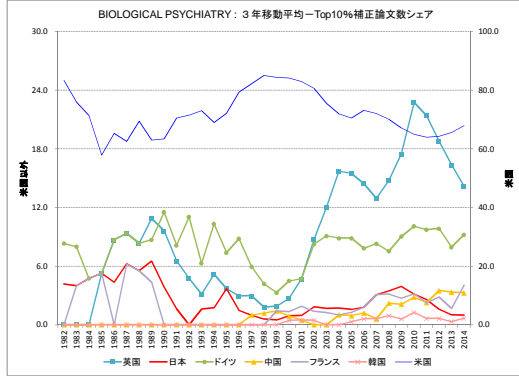
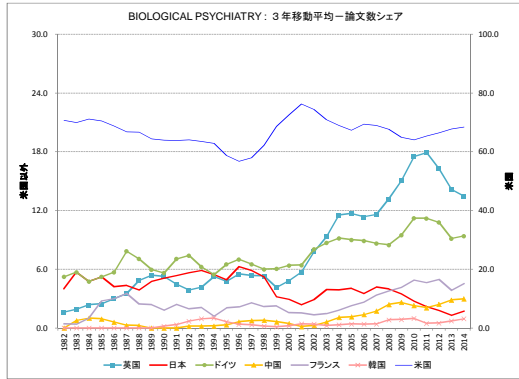


表17 BIOLOGICAL PSYCHIATRY

国コード	国名	1981	1982	1983	1984	1985	1986	1987	1988	1989	1990	1991	1992	1993	1994	1995	1996	1997	1998	1999	2000	2001	2002	2003	2004	2005	2006	2007	2008	2009	2010	2011	2012	2013	2014	2015
C001	USA	65	52	59	73	78	78	73	94	105	123	125	123	116	97	98	175	180	187	265	184	187	166	212	201	226	224	259	195	192	209	188	169	167	138	132
C002	UK	1	1	2	2	3	3	4	3	4	5	11	8	7	7	8	11	11	20	17	23	7	21	13	25	38	44	31	41	40	40	30	30	26	36	24
C003	JAPAN	1	4	5	6	5	5	8	5	9	11	9	11	12	8	7	16	22	12	14	4	9	9	19	9	12	10	14	9	7	3	4	2	2	5	
C004	GERMANY	3	6	4	5	5	7	7	15	7	8	16	17	9	7	11	23	22	18	23	18	16	12	33	28	26	35	30	21	31	36	26	25	24	15	21
C005	PEOPLES R CHINA	0	0	0	2	1	0	1	0	0	0	0	1	0	0	0	2	3	2	3	1	0	0	2	3	5	3	6	8	9	1	5	8	6	5	
C006	FRANCE	1	0	0	2	1	2	8	2	5	3	4	3	7	1	3	2	3	5	4	8	10	9	14	13	11	21	13	11	21	8	10	9	10		
C010	SOUTH KOREA	0	0	0	0	0	0	0	0	0	0	0	0	0	0	0	0	0	0	0	0	0	0	0	0	0	0	0	0	0	0	0	0	0	0	
	全体	81	77	81	89	100	121	101	140	162	185	185	191	162	156	157	317	324	294	398	260	245	224	292	300	335	332	354	297	304	317	288	251	239	210	190

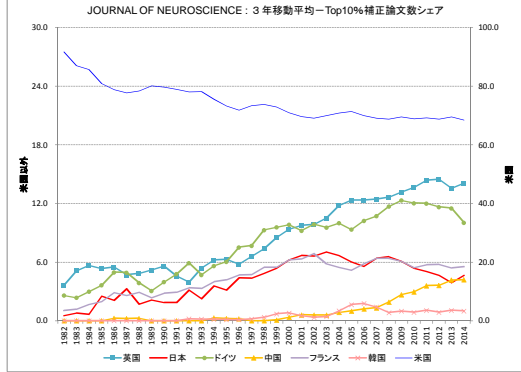
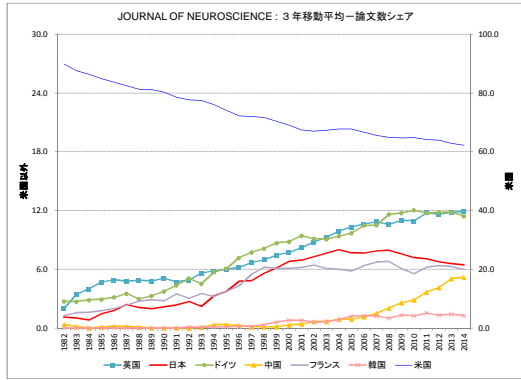
国コード	国名	1981	1982	1983	1984	1985	1986	1987	1988	1989	1990	1991	1992	1993	1994	1995	1996	1997	1998	1999	2000	2001	2002	2003	2004	2005	2006	2007	2008	2009	2010	2011	2012	2013	2014	2015
C001	USA	58.7	61.3	70.0	76.3	76.3	82.3	91.3	108.0	117.7	123.7	121.3	112.0	103.7	123.3	151.0	180.7	210.7	215.3	215.3	182.3	183.3	193.0	213.0	217.0	236.3	226.0	262.0	215.3	186.7	196.3	186.7	174.7	158.0	145.7	
C002	UK	1.3	1.7	2.3	2.7	3.3	4.3	6.7	9.0	9.7	8.7	7.3	7.3	8.7	10.0	14.7	16.7	19.0	13.0	14.3	13.7	10.7	26.3	36.7	37.7	38.7	38.0	42.0	46.0	53.7	51.7	42.7	33.0	28.7		
C003	JAPAN	3.3	5.0	4.7	5.7	4.7	5.3	5.3	8.0	9.3	10.3	10.7	10.3	10.3	10.3	16.7	18.3	17.7	10.7	9.7	7.3	10.7	10.0	13.0	12.0	13.7	12.7	10.7	8.3	6.3	4.7	3.0	3.7			
C004	GERMANY	4.3	5.0	4.7	5.7	6.3	6.7	9.7	10.0	10.3	13.7	14.0	11.0	9.0	13.7	18.3	20.3	16.0	19.0	15.3	20.3	23.7	28.3	29.0	28.3	29.0	32.3	27.0	28.3	28.3	21.3	20.0				
C005	PEOPLES R CHINA	0.0	0.0	0.0	0.0	0.0	0.0	0.0	0.0	0.0	0.0	0.0	0.0	0.0	0.0	0.0	0.0	0.0	0.0	0.0	0.0	0.0	0.0	0.0	0.0	0.0	0.0	0.0	0.0	0.0	0.0	0.0	0.0	0.0		
C006	FRANCE	0.3	0.3	1.0	3.0	3.3	4.3	3.3	4.0	3.3	4.7	3.7	3.7	2.0	4.3	5.7	8.0	7.3	7.0	4.7	3.7	3.3	4.0	5.7	7.3	9.0	11.0	12.0	12.7	15.0	13.0	9.0	9.7			
C010	SOUTH KOREA	0.0	0.0	0.0	0.0	0.0	0.0	0.0	0.0	0.0	0.0	0.0	0.0	0.0	0.0	0.0	0.0	0.0	0.0	0.0	0.0	0.0	0.0	0.0	0.0	0.0	0.0	0.0	0.0	0.0	0.0	0.0	0.0	0.0		
	全体	83.0	87.7	96.3	106.3	111.0	123.3	137.0	167.7	184.0	192.7	182.3	176.3	185.0	210.0	266.0	311.7	336.7	314.0	297.0	239.0	253.0	272.0	309.0	322.3	340.3	327.7	316.3	306.0	306.3	286.7	262.7	233.0	210.0		

国コード	国名	1981	1982	1983	1984	1985	1986	1987	1988	1989	1990	1991	1992	1993	1994	1995	1996	1997	1998	1999	2000	2001	2002	2003	2004	2005	2006	2007	2008	2009	2010	2011	2012	2013	2014	2015
C001	USA	70.7	70.0	71.2	70.3	68.8	68.8	65.7	64.4	63.9	63.9	64.1	63.5	62.5	58.7	66.8	68.0	62.2	68.4	72.5	70.3	74.4	71.0	68.5	67.3	69.4	60.0	67.8	64.9	64.1	65.4	65.5	47.7	68.4	4	
C002	UK	1.6	1.9	2.4	2.5	3.0	3.5	4.9	5.4	5.3	4.5	3.9	4.2	5.3	5.5	5.3	5.3	4.1	4.8	5.7	7.8	9.3	11.5	11.7	11.4	13.2	15.0	17.5	17.9	16.2	14.1	13.5				
C003	JAPAN	3.8	5.0	4.7	5.7	4.7	5.3	5.3	8.0	9.3	10.3	10.7	10.3	10.3	10.3	16.7	18.3	17.7	10.7	9.7	7.3	10.7	10.0	13.0	12.0	13.7	12.7	10.7	8.3	6.3	4.7	3.0	3.7			
C004	GERMANY	5.2	5.7	4.7	5.7	5.7	7.3	7.1	6.0	5.8	7.1	7.4	6.2	5.5	6.5	7.0	6.5	6.0	6.1	6.4	6.4	8.0	8.7	9.2	9.0	8.9	8.6	8.5	9.5	11.2	11.2	10.8	9.1	8.4		
C005	PEOPLES R CHINA	0.0	0.0	0.0	0.0	0.0	0.0	0.0	0.0	0.0	0.0	0.0	0.0	0.0	0.0	0.0	0.0	0.0	0.0	0.0	0.0	0.0	0.0	0.0	0.0	0.0	0.0	0.0	0.0	0.0	0.0	0.0	0.0	0.0		
C006	FRANCE	0.0	0.0	1.0	3.0	3.0	3.3	2.4	2.4	1.8	2.4	1.8	2.1	2.1	2.4	2.2	1.0	1.0	1.0	1.0	1.0	1.0	1.0	1.0	1.0	1.4	2.0	3.4	3.4	3.0	3.4	2.4	3.1	1.7	4.4	
C010	SOUTH KOREA	0.0	0.0	0.0	0.0	0.0	0.0	0.0	0.0	0.0	0.0	0.0	0.0	0.0	0.0	0.0	0.0	0.0	0.0	0.0	0.0	0.0	0.0	0.0	0.0	0.0	0.0	0.0	0.0	0.0	0.0	0.0	0.0	0.0		
	全体	83.0	87.7	96.3	106.3	111.0	123.3	137.0	167.7	184.0	192.7	182.3	176.3	185.0	210.0	266.0	311.7	336.7	314.0	297.0	239.0	253.0	272.0	309.0	322.3	340.3	327.7	316.3	306.0	306.3	286.7	262.7	233.0	210.0		

国コード	国名	1981	1982	1983	1984	1985	1986	1987	1988	1989	1990	1991	1992	1993	1994	1995	1996	1997	1998	1999	2000	2001	2002	2003	2004	2005	2006	2007	2008	2009	2010	2011	2012	2013	2014	2015	
C001	USA	5.1	7.0	8.0	4.0	3.0	4.0	8.1	8.0	9.1	12.1	12.0	19.4	14.0	13.1	13.0	13.0	29.2	42.0	72.4	69.5	90.1	61.1	65.4	57.0	90.0	76.1	76.0	80.9	66.4	79.0	69.2	69.7	69.4	60.8	79.2	
C002	UK	0.0	0.0	0.0	0.0	1.0	1.0	1.0	1.0	1.0	3.0	1.0	0.0	2.0	0.0	1.0	1.0	0.0	2.0	1.0	4.0	5.0	10.1	14.2	22.3	13.2	13.2	16.2	18.1	24.6	31.0	12.6	17.3	21.0	8.2		
C003	JAPAN	0.0	1.0	0.0	0.0	1.0	1.0	1.0	1.0	1.0	2.0	3.0	0.0	4.0	0.0	2.0	2.0	2.0	2.0	2.0	3.0	2.0	5.0	3.0	10.1	9.1	13.3	10.3	7.3	14.2	3.1	10.1	1.0				
C004	GERMANY	0.0	1.0	1.0	0.0	1.0	1.0	1.0	1.0	1.0	2.0	3.0	0.0	4.0	0.0	2.0	2.0	2.0	2.0	2.0	3.0	2.0	5.0	3.0	10.1	9.1	13.3	10.3	7.3	14.2	3.1	10.1	1.0				
C005	PEOPLES R CHINA	0.0	0.0	0.0	0.0	0.0	0.0	0.0	0.0	0.0	0.0	0.0	0.0	0.0	0.0	0.0	0.0	0.0	0.0	0.0	0.0	0.0	0.0	0.0	0.0	0.0	0.0	0.0	0.0	0.0	0.0	0.0	0.0	0.0			
C006	FRANCE	0.0	0.0	1.0	0.0	0.0	0.0	0.0	0.0	0.0	0.0	0.0	0.0	0.0	0.0	0.0	0.0	0.0	0.0	0.0	0.0	0.0	0.0	0.0	0.0	0.0	0.0	0.0	0.0	0.0	0.0	0.0	0.0	0.0			
C010	SOUTH KOREA	0.0	0.0	0.0	0.0	0.0	0.0	0.0	0.0	0.0	0.0	0.0	0.0	0.0	0.0	0.0	0.0	0.0	0.0	0.0	0.0	0.0	0.0	0.0	0.0	0.0	0.0	0.0	0.0	0.0	0.0	0.0	0.0	0.0			
	全体	8.1	8.0	11.0	6.0	4.0	9.1	10.1	13.1	13.1	20.2	18.1	24.4	22.0	18.2	17.1	16.1	33.3	50.9	84.9	78.4	80.1	74.1	74.1	64.5	84.4	76.4	86.3	81.1	119.3	106.9	117.9	106.5	99.2	124.9	88.4	120.9

参考資料4 特定ジャーナル分析に関する基礎データ

図表名 JOURNAL OF NEUROSCIENCE : 3年移動平均論文数シェア 米国以外
 JOURNAL OF NEUROSCIENCE : 3年移動平均Top10%補正論文数シェア 米国



図表名 JOURNAL OF NEUROSCIENCE

国コード	国名	1981	1982	1983	1984	1985	1986	1987	1988	1989	1990	1991	1992	1993	1994	1995	1996	1997	1998	1999	2000	2001	2002	2003	2004	2005	2006	2007	2008	2009	2010	2011	2012	2013	2014	2015	
C001	USA	129	162	207	248	302	319	315	354	315	295	292	313	347	503	519	544	650	699	729	738	730	790	866	845	831	952	967	918	1007	1080	1187	1097	1136	899	823	
C002	UK	1	2	8	14	13	21	21	13	23	18	15	20	22	39	41	46	39	71	79	86	88	101	124	119	128	156	162	161	166	180	188	211	186	188	172	175
C003	JAPAN	2	1	3	3	1	11	8	10	7	8	11	10	12	11	39	32	46	50	69	72	76	80	99	99	103	98	97	120	124	109	119	131	132	110	109	85
C004	GERMANY	2	4	9	6	10	14	11	17	8	14	20	18	28	26	51	51	68	84	87	100	87	119	109	109	134	133	164	157	198	192	214	196	208	178	139	
C005	PEOPLES R CHINA	1	1	0	0	0	0	1	0	0	0	0	0	0	1	0	1	0	2	1	1	1	1	1	1	1	1	1	1	1	1	1	1	1	1	1	1
C006	FRANCE	3	2	2	7	5	8	11	11	12	8	8	8	8	24	25	30	47	67	68	54	74	79	76	70	78	77	107	107	89	86	129	120	78	84	94	
C010	SOUTH KOREA	0	0	0	0	0	0	0	0	0	0	0	0	0	0	0	0	0	0	0	0	0	0	0	0	0	0	0	0	0	0	0	0	0	0	0	0
	全体	142	178	238	292	348	388	388	429	396	364	363	419	443	638	618	758	898	978	1070	1074	1083	1194	1289	1233	1233	1414	1478	1438	1542	1662	1662	1668	1763	1498	1349	

国コード	国名	1981	1982	1983	1984	1985	1986	1987	1988	1989	1990	1991	1992	1993	1994	1995	1996	1997	1998	1999	2000	2001	2002	2003	2004	2005	2006	2007	2008	2009	2010	2011	2012	2013	2014	2015	
C001	USA	166.0	205.7	252.3	289.7	312.0	329.3	326.0	321.3	300.7	300.0	317.3	387.7	458.3	522.0	571.0	631.0	702.7	732.0	743.3	753.7	796.3	833.7	847.3	876.0	916.7	945.7	964.0	1001.7	1081.3	1098.0	1116.7	1030.7	952.7			
C002	UK	3.7	8.0	11.7	16.0	18.3	19.0	19.7	19.0	19.0	16.0	20.0	26.0	35.0	42.0	48.7	58.7	68.3	77.3	83.0	91.7	104.3	114.7	124.0	133.3	146.0	158.7	167.7	170.0	182.3	201.3	203.3	182.7	161.7			
C003	JAPAN	2.0	2.3	2.3	5.0	6.1	9.1	8.1	7.1	6.0	9.0	11.0	11.0	19.7	26.3	37.7	42.1	54.7	63.7	73.0	77.3	89.3	94.7	100.0	99.3	109.0	99.3	109.0	113.7	117.3	117.3	119.7	129.7	117.7	107.3	98.3	
C004	GERMANY	5.0	6.3	8.3	10.0	11.7	14.0	12.0	13.0	14.0	16.0	17.7	22.7	34.3	42.7	56.7	67.7	79.7	90.3	84.7	105.3	108.3	112.3	117.3	125.3	143.7	151.3	172.3	181.7	200.7	200.7	206.0	194.0	175.0			
C005	PEOPLES R CHINA	0.7	0.3	0.0	0.3	0.7	0.3	0.0	0.0	0.0	0.0	0.0	0.0	0.3	2.0	3.3	2.0	1.0	1.3	2.3	1.7	1.7	1.7	1.7	1.7	1.7	1.7	1.7	1.7	1.7	1.7	1.7	1.7	1.7	1.7	1.7	
C006	FRANCE	2.3	3.7	4.7	6.0	7.3	8.3	11.0	11.3	10.3	12.3	12.7	17.7	19.3	26.3	34.0	46.0	60.7	63.0	65.3	69.0	76.3	75.0	74.7	76.0	87.3	97.0	101.0	84.0	92.7	106.0	111.3	103.0	91.3			
C010	SOUTH KOREA	0.0	0.0	0.0	0.0	0.0	0.0	0.0	0.0	0.0	0.0	0.0	0.0	0.3	0.3	0.7	1.3	1.3	3.0	6.3	8.3	6.7	7.0	8.0	7.0	7.0	15.7	17.7	15.0	20.3	20.7	26.3	27.7	23.0	18.3		
	全体	184.7	234.7	292.0	341.3	372.7	389.3	403.3	389.0	374.3	359.0	408.3	509.3	600.0	704.3	790.0	876.0	980.7	1040.0	1075.7	1117.0	1188.3	1238.3	1291.3	1293.3	1504.3	1442.7	1465.3	1547.3	1668.7	1716.7	1745.0	1638.7	1510.0			

国コード	国名	1981	1982	1983	1984	1985	1986	1987	1988	1989	1990	1991	1992	1993	1994	1995	1996	1997	1998	1999	2000	2001	2002	2003	2004	2005	2006	2007	2008	2009	2010	2011	2012	2013	2014	2015				
	米国	89.9	87.6	88.4	84.9	83.7	82.3	81.3	81.1	80.3	78.5	77.7	77.5	76.1	74.1	72.3	72.0	71.7	70.4	69.0	67.5	67.0	67.3	67.7	67.7	68.7	68.5	64.9	64.7	64.4	64.2	64.0	62.9	62.2						
	英国	2.0	3.4	4.0	4.7	4.9	4.9	4.9	4.8	4.7	4.9	5.6	5.6	6.0	6.2	6.7	7.0	7.4	7.7	8.2	8.8	9.3	9.9	10.3	10.6	10.6	10.6	10.6	11.0	10.8	11.8	11.6	11.8	11.6	11.9					
	日本	1.1	1.0	0.8	1.5	1.6	2.1	1.9	2.1	1.9	2.1	2.4	2.7	2.2	3.3	3.7	4.6	4.8	5.6	6.1	6.6	6.9	7.1	7.6	8.0	7.7	7.6	7.5	7.4	7.6	7.2	7.1	6.7	6.5	6.4					
	ドイツ	2.7	2.7	2.9	2.9	3.1	3.5	3.0	3.3	3.7	4.4	5.1	4.5	5.7	6.1	7.2	7.7	8.1	8.7	8.8	9.4	9.1	9.1	9.4	9.7	10.5	10.5	11.1	11.7	12.0	11.7	11.8	11.6	11.4						
	フランス	0.4	0.1	0.0	0.1	0.2	0.2	0.1	0.0	0.0	0.0	0.0	0.1	0.3	0.4	0.3	0.1	0.1	0.1	0.3	0.4	0.6	0.7	0.8	1.1	1.3	2.0	2.8	2.4	2.4	2.4	2.4	2.4	2.4	2.4	2.4				
	韓国	0.0	0.0	0.0	0.0	0.0	0.0	0.0	0.0	0.0	0.0	0.0	0.0	0.0	0.0	0.0	0.0	0.0	0.0	0.0	0.0	0.0	0.0	0.0	0.0	0.0	0.0	0.0	0.0	0.0	0.0	0.0	0.0	0.0	0.0	0.0	0.0	0.0		
	韓国	0.0	0.0	0.0	0.0	0.0	0.0	0.0	0.0	0.0	0.0	0.0	0.0	0.1	0.1	0.1	0.1	0.2	0.2	0.3	0.6	0.8	0.8	0.6	0.6	0.6	0.9	1.2	1.2	1.2	1.2	1.0	1.3	1.2	1.3	1.4	1.3			

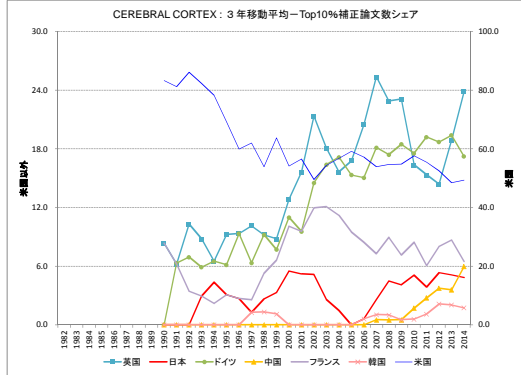
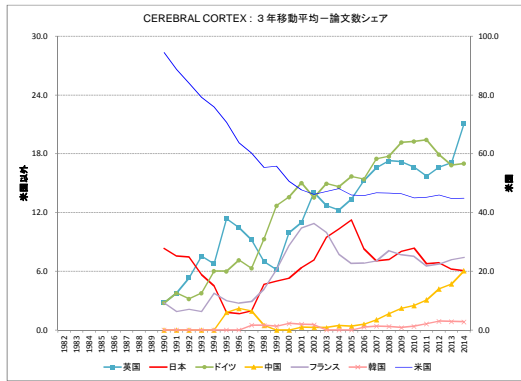
国コード	国名	1981	1982	1983	1984	1985	1986	1987	1988	1989	1990	1991	1992	1993	1994	1995	1996	1997	1998	1999	2000	2001	2002	2003	2004	2005	2006	2007	2008	2009	2010	2011	2012	2013	2014	2015		
C001	USA	44.4	58.2	75.2	88.5	95.6	107.0	102.3	124.7	99.9	117.9	128.5	139.6	193.1	181.5	197.1	254.0	258.3	284.2	271.7	291.9	298.4	276.3	274.7	281.5	282.0	294.2	293.0	292.2	317.9	319.1	334.1	293.6	294.7	244.4	203.0		
C002	UK	1.0	1.0	5.0	7.0	5.0	7.1	8.1	4.0	7.1	11.1	6.0	5.1	8.0	17.1	18.1	21.1	20.2	30.0	31.2	34.3	39.1	38.0	39.2	48.8	52.6	48.7	53.9	57.6	54.3	63.6	58.5	59.0	43.0	49.0			
C003	JAPAN	0.0	0.0	1.0	1.0	1.0	1.0	1.0	1.0	1.0	1.0	1.0	1.0	1.0	1.0	1.0	1.0	1.0	1.0	1.0	1.0	1.0	1.0	1.0	1.0	1.0	1.0	1.0	1.0	1.0	1.0	1.0	1.0	1.0	1.0	1.0	1.0	1.0
C004	GERMANY	0.0	1.0	4.0	1.0	4.0	8.1	7.1	6.0	3.0	4.0	10.0	9.2	11.0	7.1	10.1	26.1	29.3	29.0	44.3	34.3	31.0	40.0	44.3	29.5	44.5	39.5	44.8	53.8	55.4	59.0	48.1	45.8	40.9	21.0			
C005	PEOPLES R CHINA	0.0	0.0	0.0	0.0	0.0	0.0	0.0	0.0	0.0	0.0	0.0	0.0	0.0	0.0	0.0	0.0	0.0	0.0	0.0	0.0	0.0	0.0	0.0	0.0	0.0	0.0	0.0	0.0	0.0	0.0	0.0	0.0	0.0	0.0	0.0	0.0	0.0
C006	FRANCE	1.0	0.0	1.0	2.0	2.0	3.0	6.1	2.0	4.0	4.0	4.0	6.1	7.0	8.1	14.0	16.1	16.1	19.0	25.2	17.1	27.0	29.0	25.3	16.3	23.3	23.3	26.4	32.4	29.2	27.0	29.2	27.4	27.1	27.1	27.1	27.1	
C010	SOUTH KOREA	0.0	0.0	0.0	0.0	0.0	0.0	0.0	0.0	0.0	0.0	0.0	0.0	0.0	0.0	0.0	0.0	0.0	0.0	0.0	0.0	0.0	0.0	0.0	0.0	0.0	0.0	0.0	0.0	0.0	0.0	0.0	0.0	0.0	0.0	0.0	0.0	0.0
	全体	48.5	62.3	85.3	107.8	108.9	142.9	144.9	152.9	129.1	145.1	157.6	192.5	198.1	226.9	280.9	356.4	367.1	377.3	375.9	376.7	368.6	407.4	397.4	390.7	393.3	428.9	428.9	428.9	464.9	453.9	507.9	389.9	419.9	397.7	302.7		

国コード	国名	1981	1982	1983	1984	1985	1986	1987	1988	1989	1990	1991	1992	1993	1994	1995	1996	1997	1998	1999	2000	2001	2002	2003	2004	2005	2006	2007	2008	2009	2010	2011	2012	2013	2014	2015
C001	USA	59.3	74.0	86.3	97.1	101.7	111.2	108.5	113.8	114.4	127.7	137.1	151.1	170.9	211.1	256.6	265.1	271.4																		

参考資料4 特定ジャーナル分析に関する基礎データ

図表名 CEREBRAL CORTEX

CEREBRAL CORTEX：3年移動平均—論文数シェア 英国以外
CEREBRAL CORTEX：3年移動平均—Top10%補正論文数シェア 英国



図表名 CEREBRAL CORTEX

国コード	国名	1981	1982	1983	1984	1985	1986	1987	1988	1989	1990	1991	1992	1993	1994	1995	1996	1997	1998	1999	2000	2001	2002	2003	2004	2005	2006	2007	2008	2009	2010	2011	2012	2013	2014	2015		
C001	USA	0	0	0	0	0	0	0	0	0	0	34	13	32	39	30	49	37	38	44	63	46	56	72	61	91	85	139	134	124	117	119	118	125	119	186		
C002	UK	0	0	0	0	0	0	0	0	0	0	1	1	3	4	2	19	8	21	22	14	23	30	40	46	52	42	38	42	38	42	40	47	46	50	46	106	
C003	JAPAN	0	0	0	0	0	0	0	0	0	0	3	3	2	1	0	2	2	6	5	5	10	19	16	22	29	16	19	27	19	21	15	20	17	21	21	21	
C004	GERMANY	0	0	0	0	0	0	0	0	0	0	1	1	1	1	2	5	3	5	3	5	10	18	13	21	17	22	29	30	47	57	47	51	56	45	40	51	72
C005	PEOPLES R CHINA	0	0	0	0	0	0	0	0	0	0	0	0	0	0	0	0	3	1	0	0	0	0	0	0	0	0	0	0	0	0	0	0	0	0	0	0	35
C006	FRANCE	0	0	0	0	0	0	0	0	0	0	0	0	0	0	0	0	1	1	1	1	1	1	1	1	1	1	1	1	1	1	1	1	1	1	1	1	31
C010	SOUTH KOREA	0	0	0	0	0	0	0	0	0	0	0	0	0	0	0	0	0	0	0	0	0	0	0	0	0	0	0	0	0	0	0	0	0	0	0	0	0
	全体	0	0	0	0	0	0	0	0	0	0	36	17	41	48	44	76	60	69	84	100	110	120	139	134	192	190	306	270	270	284	281	288	288	282	409		

国コード	国名	1981	1982	1983	1984	1985	1986	1987	1988	1989	1990	1991	1992	1993	1994	1995	1996	1997	1998	1999	2000	2001	2002	2003	2004	2005	2006	2007	2008	2009	2010	2011	2012	2013	2014	2015	
C001	USA	0.0	0.0	0.0	0.0	0.0	0.0	0.0	0.0	0.0	11.3	15.7	26.3	28.0	33.7	39.3	38.7	41.3	39.7	48.3	51.0	55.0	58.0	63.0	74.7	79.0	105.0	119.3	132.3	125.0	120.0	118.0	120.7	120.7	143.3		
C002	UK	0.0	0.0	0.0	0.0	0.0	0.0	0.0	0.0	0.0	0.3	0.7	1.7	2.7	3.0	6.3	6.3	6.3	5.0	5.3	10.0	12.7	17.7	17.0	19.0	23.0	35.0	42.3	46.0	46.3	44.3	41.0	43.7	46.0	67.3		
C003	JAPAN	0.0	0.0	0.0	0.0	0.0	0.0	0.0	0.0	0.0	1.0	1.3	2.3	2.0	1.0	1.0	1.0	1.3	3.3	4.3	5.3	7.3	9.0	12.7	16.0	19.3	19.0	19.0	20.3	21.7	22.3	17.7	19.0	16.7	19.3		
C004	GERMANY	0.0	0.0	0.0	0.0	0.0	0.0	0.0	0.0	0.0	0.3	0.7	1.0	1.3	2.7	3.3	4.3	4.3	6.7	11.0	13.7	17.3	17.0	20.0	22.7	27.0	35.3	44.7	50.3	51.7	51.3	50.7	47.0	40.3	54.3		
C005	PEOPLES R CHINA	0.0	0.0	0.0	0.0	0.0	0.0	0.0	0.0	0.0	0.0	0.0	0.0	0.0	0.0	0.0	0.0	0.0	0.0	0.0	0.0	0.0	0.0	0.0	0.0	0.0	0.0	0.0	0.0	0.0	0.0	0.0	0.0	0.0	0.0	0.0	0.0
C006	FRANCE	0.0	0.0	0.0	0.0	0.0	0.0	0.0	0.0	0.0	0.3	0.3	0.7	0.7	1.7	1.7	1.7	2.0	3.0	5.3	6.7	12.0	13.7	13.3	12.0	11.7	15.7	18.0	23.0	20.7	20.0	17.0	17.7	19.3	23.7		
C010	SOUTH KOREA	0.0	0.0	0.0	0.0	0.0	0.0	0.0	0.0	0.0	0.0	0.0	0.0	0.0	0.0	0.0	0.0	0.0	0.0	0.0	0.0	0.0	0.0	0.0	0.0	0.0	0.0	0.0	0.0	0.0	0.0	0.0	0.0	0.0	0.0	0.0	0.0
	全体	0.0	0.0	0.0	0.0	0.0	0.0	0.0	0.0	0.0	12.0	17.7	31.3	35.3	44.3	52.7	50.7	58.7	71.7	85.7	100.7	115.3	129.7	133.7	150.0	172.0	229.3	255.3	283.7	269.7	269.7	261.0	252.3	259.3	319.7		

国コード	国名	1981	1982	1983	1984	1985	1986	1987	1988	1989	1990	1991	1992	1993	1994	1995	1996	1997	1998	1999	2000	2001	2002	2003	2004	2005	2006	2007	2008	2009	2010	2011	2012	2013	2014	2015		
	英国										64.4	58.7	84.0	78.2	35.5	70.7	63.7	60.2	85.3	55.8	50.7	43.7	48.2	47.1	48.2	45.9	45.5	46.7	46.7	46.4	45.0	45.2	48.0	44.8	44.8			
	米国										28	38	5.3	7.5	6.5	11.4	10.4	9.2	7.0	6.2	9.9	11.0	14.1	12.7	12.3	13.4	15.3	16.6	17.3	17.2	16.6	15.7	16.6	17.1	21.1			
	日本										6.1	7.5	7.4	5.7	4.5	1.8	1.6	1.1	4.7	5.0	5.3	6.4	7.2	8.0	10.3	11.9	8.3	7.0	7.2	6.0	6.4	6.8	6.9	6.2	6.0			
	ドイツ										2.8	3.8	3.2	3.8	6.0	6.0	7.1	6.3	9.3	12.7	13.6	15.0	13.5	15.0	14.6	15.7	15.4	17.5	17.7	19.2	19.3	19.4	17.9	16.8	17.0			
	中国										0.0	0.0	0.0	0.0	0.0	0.0	0.0	0.0	0.0	0.0	0.0	0.0	0.0	0.0	0.0	0.0	0.0	0.0	0.0	0.0	0.0	0.0	0.0	0.0	0.0	0.0	0.0	
	フランス										0.0	0.0	0.0	0.0	0.0	0.0	0.0	0.0	0.0	0.0	0.0	0.0	0.0	0.0	0.0	0.0	0.0	0.0	0.0	0.0	0.0	0.0	0.0	0.0	0.0	0.0	0.0	0.0
	韓国										0.0	0.0	0.0	0.0	0.0	0.0	0.0	0.0	0.0	0.0	0.0	0.0	0.0	0.0	0.0	0.0	0.0	0.0	0.0	0.0	0.0	0.0	0.0	0.0	0.0	0.0	0.0	0.0
	韓国										0.0	0.0	0.0	0.0	0.0	0.0	0.0	0.0	0.5	0.5	0.4	0.7	0.6	0.5	0.0	0.0	0.0	0.3	0.4	0.4	0.2	0.4	0.6	0.9	0.9	0.8		

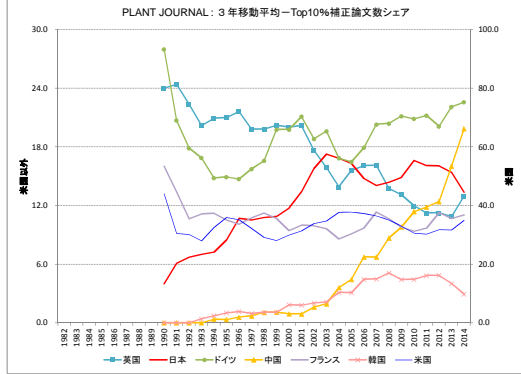
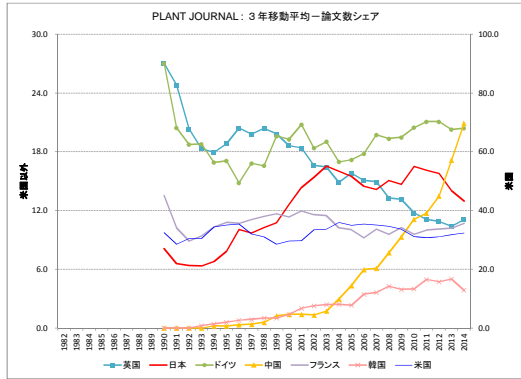
国コード	国名	1981	1982	1983	1984	1985	1986	1987	1988	1989	1990	1991	1992	1993	1994	1995	1996	1997	1998	1999	2000	2001	2002	2003	2004	2005	2006	2007	2008	2009	2010	2011	2012	2013	2014	2015	
C001	USA	0.0	0.0	0.0	0.0	0.0	0.0	0.0	0.0	0.0	0.0	9.1	12.0	13.1	11.0	21.1	13.1	15.0	13.1	39.2	18.0	19.0	25.1	21.3	32.4	28.4	35.6	41.3	34.2	32.0	31.2	34.9	34.9	33.8	32.9	40.0	
C002	UK	0.0	0.0	0.0	0.0	0.0	0.0	0.0	0.0	0.0	1.0	0.0	2.0	1.0	0.0	5.0	2.0	1.0	4.0	3.0	7.0	8.0	9.1	3.0	8.1	12.2	14.2	23.3	9.1	13.3	7.2	8.4	12.3	12.8	28.0		
C003	JAPAN	0.0	0.0	0.0	0.0	0.0	0.0	0.0	0.0	0.0	0.0	0.0	0.0	1.0	1.0	0.0	1.0	0.0	1.0	2.0	3.0	1.0	2.0	3.0	3.0	0.0	0.0	0.0	1.0	4.0	4.0	3.0	3.2	3.1	3.2	3.5	
C004	GERMANY	0.0	0.0	0.0	0.0	0.0	0.0	0.0	0.0	0.0	0.0	0.0	1.0	1.0	0.0	2.0	2.0	3.0	4.0	3.0	5.0	3.0	4.0	3.0	5.0	3.0	9.1	7.1	7.1	11.2	12.2	12.4	11.5	12.2	15.7	14.0	
C005	PEOPLES R CHINA	0.0	0.0	0.0	0.0	0.0	0.0	0.0	0.0	0.0	0.0	0.0	0.0	0.0	0.0	0.0	0.0	0.0	0.0	0.0	0.0	0.0	0.0	0.0	0.0	0.0	0.0	0.0	0.0	0.0	0.0	0.0	0.0	0.0	0.0	0.0	0.0
C006	FRANCE	0.0	0.0	0.0	0.0	0.0	0.0	0.0	0.0	0.0	0.0	0.0	0.0	0.0	0.0	0.0	0.0	0.0	0.0	0.0	0.0	0.0	0.0	0.0	0.0	0.0	0.0	0.0	0.0	0.0	0.0	0.0	0.0	0.0	0.0	0.0	0.0
C010	SOUTH KOREA	0.0	0.0	0.0	0.0	0.0	0.0	0.0	0.0	0.0	0.0	0.0	0.0	0.0	0.0	0.0	0.0	0.0	0.0	0.0	0.0	0.0	0.0	0.0	0.0	0.0	0.0	0.0	0.0	0.0	0.0	0.0	0.0	0.0	0.0	0.0	0.0
	全体	0.0	0.0	0.0	0.0	0.0	0.0	0.0	0.0	0.0	12.0	4.1	18.0	17.1	16.1	26.1	27.3	20.9	23.9	42.9	38.1	35.0	44.3	37.6	53.9	47.1	67.1	60.9	53.9	61.9	64.1	62.9	65.1	74.9	102.7		

国コード	国名	1981	1982	1983	1984	1985	1986	1987	1988	1989	1990	1991	1992	1993	1994	1995	1996	1997	1998	1999	2000	2001	2002	2003	2004	2005	2006	2007	2008	2009	2010	2011	2012	2013	2014	2015
C001	USA	0.0	0.0	0.0	0.0	0.0	0.0	0.0	0.0	0.0	0.3	4.4	8.4	9.4	12.1	15.1	15.1	16.4	13.7	19.4	19.4	21.8	19.4	21.2	25.9	27.4	32.1	35.2	37.1	36.2	34.9	34.9	33.8	32.9	40.0	
C002	UK	0.0	0.0	0.0	0.0	0.0	0.0	0.0	0.0	0.0	0.3	0.3	1.0	1.0	2.0	2.3	2.7	2.7	4.7	6.0	8.4	7.0	7.1	7.8	11.5	16.6	15.3	15.2	9.9	9.7	9.3	12.8	18.3			
C003	JAPAN	0.0	0.0	0.																																

参考資料4 特定ジャーナル分析に関する基礎データ

図表名 PLANT JOURNAL

PLANT JOURNAL : 3年移動平均—論文数シェア
PLANT JOURNAL : 3年移動平均—Top10%補正論文数シェア
米国以外
米国



図表名 PLANT JOURNAL

国コード	国名	1981	1982	1983	1984	1985	1986	1987	1988	1989	1990	1991	1992	1993	1994	1995	1996	1997	1998	1999	2000	2001	2002	2003	2004	2005	2006	2007	2008	2009	2010	2011	2012	2013	2014	2015	
C001	USA	0	0	0	0	0	0	0	0	0	0	12	27	57	46	64	69	88	99	87	69	76	88	113	110	118	104	128	123	112	114	102	107	113	105	109	
C002	UK	0	0	0	0	0	0	0	0	0	0	0	0	0	0	0	0	0	0	0	0	0	0	0	0	0	0	0	0	0	0	0	0	0	0	0	0
C003	JAPAN	0	0	0	0	0	0	0	0	0	0	0	0	0	0	0	0	0	0	0	0	0	0	0	0	0	0	0	0	0	0	0	0	0	0	0	0
C004	GERMANY	0	0	0	0	0	0	0	0	0	0	0	0	0	0	0	0	0	0	0	0	0	0	0	0	0	0	0	0	0	0	0	0	0	0	0	0
C005	PEOPLES R CHINA	0	0	0	0	0	0	0	0	0	0	0	0	0	0	0	0	0	0	0	0	0	0	0	0	0	0	0	0	0	0	0	0	0	0	0	0
C006	FRANCE	0	0	0	0	0	0	0	0	0	0	0	0	0	0	0	0	0	0	0	0	0	0	0	0	0	0	0	0	0	0	0	0	0	0	0	0
C010	SOUTH KOREA	0	0	0	0	0	0	0	0	0	0	0	0	0	0	0	0	0	0	0	0	0	0	0	0	0	0	0	0	0	0	0	0	0	0	0	0
	全体	0	0	0	0	0	0	0	0	0	0	0	0	0	0	0	0	0	0	0	0	0	0	0	0	0	0	0	0	0	0	0	0	0	0	0	0

国コード	国名	1981	1982	1983	1984	1985	1986	1987	1988	1989	1990	1991	1992	1993	1994	1995	1996	1997	1998	1999	2000	2001	2002	2003	2004	2005	2006	2007	2008	2009	2010	2011	2012	2013	2014	2015
C001	USA	0.0	0.0	0.0	0.0	0.0	0.0	0.0	0.0	0.0	4.0	13.0	32.0	43.3	55.7	59.7	74.0	85.7	91.7	85.0	78.3	78.7	93.3	103.7	113.7	110.7	116.7	119.0	121.7	117.0	109.3	107.7	107.3	108.3	109.0	
C002	UK	0.0	0.0	0.0	0.0	0.0	0.0	0.0	0.0	0.0	3.3	11.3	21.3	26.0	29.0	32.0	42.7	53.0	60.3	59.0	49.3	48.7	46.3	50.7	47.0	50.0	49.7	50.7	46.7	45.7	41.3	36.7	37.7	35.3	37.3	
C003	JAPAN	0.0	0.0	0.0	0.0	0.0	0.0	0.0	0.0	0.0	1.0	3.0	6.7	9.0	11.0	13.3	21.0	26.0	29.3	32.0	33.3	39.0	43.0	51.0	50.7	49.0	47.7	49.0	53.0	51.0	39.0	36.3	34.7	47.7	43.7	
C004	GERMANY	0.0	0.0	0.0	0.0	0.0	0.0	0.0	0.0	0.0	0.0	0.0	0.0	0.0	0.0	0.0	0.0	0.0	0.0	0.0	0.0	0.0	0.0	0.0	0.0	0.0	0.0	0.0	0.0	0.0	0.0	0.0	0.0	0.0	0.0	0.0
C005	PEOPLES R CHINA	0.0	0.0	0.0	0.0	0.0	0.0	0.0	0.0	0.0	0.0	0.0	0.0	0.0	0.0	0.0	0.0	0.0	0.0	0.0	0.0	0.0	0.0	0.0	0.0	0.0	0.0	0.0	0.0	0.0	0.0	0.0	0.0	0.0	0.0	0.0
C006	FRANCE	0.0	0.0	0.0	0.0	0.0	0.0	0.0	0.0	0.0	0.7	4.7	9.3	13.3	16.7	18.3	23.3	29.7	33.7	34.7	30.0	31.7	32.3	35.3	31.7	30.3	34.3	33.7	35.7	33.7	35.0	35.0	34.7	36.0		
C010	SOUTH KOREA	0.0	0.0	0.0	0.0	0.0	0.0	0.0	0.0	0.0	0.0	0.0	0.0	0.0	0.0	0.0	0.0	0.0	0.0	0.0	0.0	0.0	0.0	0.0	0.0	0.0	0.0	0.0	0.0	0.0	0.0	0.0	0.0	0.0	0.0	0.0
	全体	0.0	0.0	0.0	0.0	0.0	0.0	0.0	0.0	0.0	15.3	49.7	109.0	149.0	181.7	190.0	299.0	397.7	426.7	427.3	397.3	384.7	429.3	509.3	516.3	516.3	529.7	529.7	551.7	547.7	551.7	546.7	546.3	549.3	559.7	

国コード	国名	1981	1982	1983	1984	1985	1986	1987	1988	1989	1990	1991	1992	1993	1994	1995	1996	1997	1998	1999	2000	2001	2002	2003	2004	2005	2006	2007	2008	2009	2010	2011	2012	2013	2014	2015	
	米国										32.4	28.5	30.5	30.5	34.4	35.1	38.4	37.0	31.0	25.4	24.4	29.7	32.4	33.6	35.9	35.0	33.4	35.0	34.6	33.7	31.1	30.8	31.0	31.8	32.4		
	英国										27.0	24.8	20.3	18.3	17.9	18.9	20.4	19.4	19.8	18.6	16.6	16.4	14.9	15.9	15.1	14.9	13.3	13.7	11.8	11.1	10.9	10.4	11.1				
	日本										6.1	6.6	6.3	6.3	6.6	7.6	10.0	9.7	10.3	10.3	12.4	14.4	15.4	16.5	16.0	15.5	14.3	14.1	15.1	14.7	16.3	16.1	15.8	16.0	13.0		
	ドイツ										27.0	20.4	18.7	18.8	18.9	17.1	14.8	16.8	16.8	19.6	19.3	20.8	18.4	19.0	17.0	17.2	17.8	19.3	19.5	20.5	21.1	21.1	20.3	20.4			
	中国										0.0	0.0	0.0	0.0	0.0	0.0	0.0	0.0	0.0	0.0	0.0	0.0	0.0	0.0	0.0	0.0	0.0	0.0	0.0	0.0	0.0	0.0	0.0	0.0	0.0	0.0	0.0
	フランス										0.0	0.0	0.0	0.0	0.0	0.0	0.0	0.0	0.0	0.0	0.0	0.0	0.0	0.0	0.0	0.0	0.0	0.0	0.0	0.0	0.0	0.0	0.0	0.0	0.0	0.0	0.0
	韓国										0.0	0.0	0.0	0.0	0.0	0.0	0.0	0.0	0.0	0.0	0.0	0.0	0.0	0.0	0.0	0.0	0.0	0.0	0.0	0.0	0.0	0.0	0.0	0.0	0.0	0.0	0.0
	韓国										0.0	0.0	0.0	0.2	0.4	0.6	0.8	0.8	0.8	1.0	1.0	1.4	2.0	2.3	2.4	2.4	2.3	3.4	3.6	4.3	3.9	4.0	5.0	4.7	5.0	3.9	

国コード	国名	1981	1982	1983	1984	1985	1986	1987	1988	1989	1990	1991	1992	1993	1994	1995	1996	1997	1998	1999	2000	2001	2002	2003	2004	2005	2006	2007	2008	2009	2010	2011	2012	2013	2014	2015
C001	USA	0.0	0.0	0.0	0.0	0.0	0.0	0.0	0.0	0.0	0.0	11.2	14.4	29.3	26.4	36.4	46.0	41.8	50.1	45.2	39.6	39.6	45.3	44.2	49.8	47.1	45.5	47.1	49.4	46.0	47.4	49.1	49.6	49.5	54.1	49.4
C002	UK	0.0	0.0	0.0	0.0	0.0	0.0	0.0	0.0	0.0	6.1	14.4	20.2	15.2	23.2	24.3	28.6	31.7	33.2	29.5	25.3	35.9	27.1	27.6	27.2	37.3	34.8	30.3	25.8	28.2	25.4	19.2	24.7	18.0	26.8	
C003	JAPAN	0.0	0.0	0.0	0.0	0.0	0.0	0.0	0.0	0.0	1.0	4.1	7.1	6.1	7.1	12.3	18.4	14.3	18.1	18.3	19.2	26.6	37.1	34.8	27.2	34.3	29.7	25.4	40.3	39.3	39.0	39.3	24.7	28.6	19.4	
C004	GERMANY	0.0	0.0	0.0	0.0	0.0	0.0	0.0	0.0	0.0	0.0	0.0	0.0	0.0	0.0	0.0	0.0	0.0	0.0	0.0	0.0	0.0	0.0	0.0	0.0	0.0	0.0	0.0	0.0	0.0	0.0	0.0	0.0	0.0	0.0	0.0
C005	PEOPLES R CHINA	0.0	0.0	0.0	0.0	0.0	0.0	0.0	0.0	0.0	0.0	0.0	0.0	0.0	0.0	0.0	0.0	0.0	0.0	0.0	0.0	0.0	0.0	0.0	0.0	0.0	0.0	0.0	0.0	0.0	0.0	0.0	0.0	0.0	0.0	0.0
C006	FRANCE	0.0	0.0	0.0	0.0	0.0	0.0	0.0	0.0	0.0	4.1	7.4	8.1	12.2	11.1	9.2	16.3	21.9	15.1	13.2	13.2	18.4	18.1	18.4	14.1	21.2	24.6	29.3	19.6	17.1	25.4	23.2	23.6	17.0	19.4	
C010	SOUTH KOREA	0.0	0.0	0.0	0.0	0.0	0.0	0.0	0.0	0.0	0.0	0.0	0.0	0.0	0.0	0.0	0.0	0.0	0.0	0.0	0.0	0.0	0.0	0.0	0.0	0.0	0.0	0.0	0.0	0.0	0.0	0.0	0.0	0.0	0.0	0.0
	全体	0.0	0.0	0.0	0.0	0.0	0.0	0.0	0.0	0.0	26.4	35.5	88.0	90.4	97.9	117.3	143.8	146.7	160.9	139.2	136.7	181.1	180.6	209.6	188.8	192.4	236.8	207.1	216.3	216.4	223.5	204.0	195.9	198.1	199.0	

国コード	国名	1981	1982	1983	1984	1985	1986	1987	1988	1989	1990	1991	1992	1993	1994	1995	1996	1997	1998	1999	2000	2001	2002	2003	2004	2005	2006	2007	2008	2009	2010	2011	2012	2013	2014	2015
C001	USA	0.0	0.0	0.0	0.0	0.0	0.0	0.0	0.0	0.0	2.0	6.8	13.8	16.6	19.6	8.5	12.8	19.0	16.9	17.7	20.0	26.3	23.8	30.7	33.1	34.2	30.4	26.2	29.4	24.3	23.1	20.6	23.5			
C002	UK	0.0	0.0	0.0	0.0	0.0	0.0	0.0	0.0	0.0	0.3	1.1	1.8	1.7	1.7	1.7	1.7	1.7	1.7	1.7	1.7	1.7	1.7	1.7	1.7	1.7	1.7	1.7	1.7	1.7	1.7	1.7	1.7	1.7	1.7	1.7
C003	JAPAN	0.0	0.0	0.0	0.0																															

参考資料4 特定ジャーナル分析に関する基礎データ

表16 ASTROPHYSICAL JOURNAL : 3年移動平均論文数シェア 米国以外
ASTROPHYSICAL JOURNAL : 3年移動平均Top10%補正論文数 米国

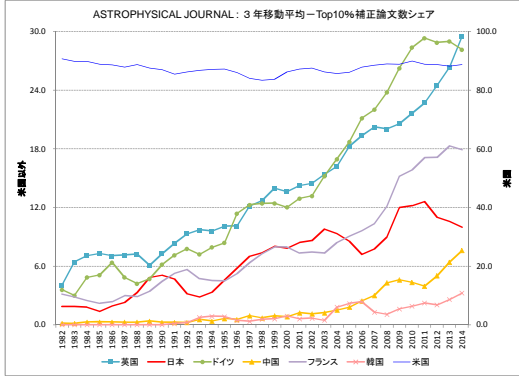
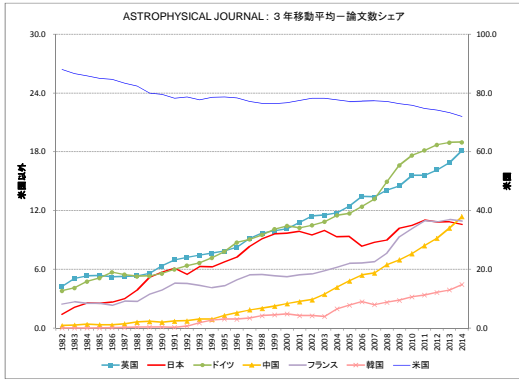


表17 ASTROPHYSICAL JOURNAL

国コード	国名	1981	1982	1983	1984	1985	1986	1987	1988	1989	1990	1991	1992	1993	1994	1995	1996	1997	1998	1999	2000	2001	2002	2003	2004	2005	2006	2007	2008	2009	2010	2011	2012	2013	2014	2015
C001	USA	1071	1051	1055	1153	1011	1037	1019	1105	1169	1187	1208	1299	1462	1560	1678	1673	1687	1684	1680	1821	1946	1811	1813	1890	2000	2147	2174	1647	2135	1890	1884	2265	2120	2021	2107
C002	UK	46	48	50	33	51	61	71	67	73	88	118	120	136	159	163	169	188	201	213	224	277	270	282	280	320	371	402	258	452	392	388	476	500	504	570
C003	JAPAN	13	16	22	43	30	26	44	49	63	112	81	95	109	152	170	151	185	190	210	243	235	235	221	261	218	258	210	207	277	279	260	346	301	303	315
C004	GERMANY	45	42	52	62	64	67	76	64	71	84	96	105	133	131	164	183	206	194	230	262	248	227	289	269	308	343	364	309	481	444	445	572	562	523	563
C005	PEOPLES R CHINA	3	1	5	5	4	3	11	9	11	9	7	19	13	19	22	39	39	44	59	57	70	81	73	109	131	139	178	121	238	190	144	393	286	314	387
C006	FRANCE	35	28	39	27	29	28	47	33	69	75	76	85	135	131	162	104	132	119	109	134	127	130	142	149	178	184	174	254	263	344	308	307	331	331	
C010	SOUTH KOREA	0	0	0	0	0	0	0	0	0	0	0	0	0	0	0	0	0	0	0	0	0	0	0	0	0	0	0	0	0	0	0	0	0	0	0
全体		1200	1249	1313	1353	1194	1231	1210	1352	1436	1518	1626	1879	1978	2208	2395	2194	2221	2200	2198	2388	2318	2291	2435	2478	2790	2798	2181	2777	2501	2423	3075	2849	2785	3006	

表18 3年移動平均—数論文数

国コード	国名	1981	1982	1983	1984	1985	1986	1987	1988	1989	1990	1991	1992	1993	1994	1995	1996	1997	1998	1999	2000	2001	2002	2003	2004	2005	2006	2007	2008	2009	2010	2011	2012	2013	2014	2015
C001	USA	1072.3	1069.7	1073.0	1067.0	1022.3	1053.7	1097.7	1147.0	1214.7	1258.0	1355.3	1443.3	1568.7	1639.0	1681.7	1684.7	1687.4	1687.0	1728.3	1815.7	1850.3	1878.7	1941.7	2019.7	2107.0	2188.3	1895.3	1890.7	1963.0	2006.3	2085.0	2137.3	2084.7		
C002	UK	51.7	64.0	68.7	67.0	83.0	86.3	71.0	80.0	97.0	112.0	124.7	138.3	152.7	163.7	177.0	187.7	214.4	224.3	238.7	258.7	276.3	277.3	284.0	328.3	368.3	344.0	382.7	399.3	404.0	418.3	454.3	484.0	524.7		
C003	JAPAN	17.0	27.0	31.7	31.7	32.0	39.0	51.7	74.3	87.3	90.0	94.7	116.3	124.7	141.0	153.3	181.7	203.3	217.3	225.7	237.0	229.7	239.0	232.7	245.0	228.0	255.0	231.3	292.3	272.0	295.0	304.3	316.7	309.3		
C004	GERMANY	46.3	52.0	59.3	64.3	66.0	69.0	70.3	76.3	85.0	96.3	110.0	123.7	143.3	162.7	187.7	197.7	210.0	237.7	246.7	253.7	267.7	260.7	287.7	306.7	338.3	338.7	384.7	411.3	467.3	487.0	526.3	552.3	549.3		
C005	PEOPLES R CHINA	3.0	3.7	4.1	4.0	3.3	3.3	6.0	6.7	6.9	11.3	12.7	16.7	18.0	18.7	23.3	40.7	44.7	50.3	59.7	67.7	70.0	63.0	104.3	138.3	147.7	144.0	186.7	172.3	196.7	226.7	257.7	287.0	287.0		
C006	FRANCE	29.7	34.0	31.3	31.7	28.0	34.7	35.0	49.7	50.0	73.3	78.0	80.3	82.3	89.3	106.0	118.3	120.0	120.7	123.3	130.3	153.0	140.3	155.3	172.7	181.0	174.0	197.0	230.3	263.3	295.7	305.0	323.0	315.3		
C010	SOUTH KOREA	0.0	0.0	0.0	0.0	0.0	0.0	0.0	0.0	0.0	0.0	0.0	0.0	0.0	0.0	0.0	0.0	0.0	0.0	0.0	0.0	0.0	0.0	0.0	0.0	0.0	0.0	0.0	0.0	0.0	0.0	0.0	0.0	0.0	0.0	0.0
全体		1218.7	1289.7	1290.0	1290.0	1208.3	1264.3	1332.7	1453.3	1526.7	1607.7	1725.0	1859.0	1997.7	2098.3	2146.7	2183.7	2207.3	2263.0	2266.7	2401.0	2418.7	2462.3	2501.0	2518.3	2727.0	2707.3	2767.3	2475.3	2506.3	2683.0	2813.3	2918.3	2983.3		

表19 3年移動平均—論文数シェア

国コード	国名	1981	1982	1983	1984	1985	1986	1987	1988	1989	1990	1991	1992	1993	1994	1995	1996	1997	1998	1999	2000	2001	2002	2003	2004	2005	2006	2007	2008	2009	2010	2011	2012	2013	2014	2015	
全体		88.0	88.6	88.6	88.0	84.6	83.3	82.4	79.9	78.0	78.3	78.6	77.6	77.6	78.4	78.4	78.4	78.4	78.4	78.4	78.4	78.4	78.4	78.4	78.4	78.4	78.4	78.4	78.4	78.4	78.4	78.4	78.4	78.4	78.4	78.4	78.4
米国		42.5	50.5	53.3	52.3	52.3	56.4	70.7	72.7	74.7	75.7	82.7	91.7	97.7	99.7	101.7	108.7	114.7	115.7	118.7	124.7	134.7	141.7	145.7	158.7	158.7	162.7	163.7	181.7	182.7	183.7	181.7	181.7	181.7	181.7	181.7	181.7
英国		1.4	2.1	2.5	2.5	2.6	3.0	5.2	9.7	6.1	6.5	6.3	6.2	6.8	7.5	8.1	9.1	9.1	9.1	9.1	9.1	9.1	9.1	9.1	9.1	9.1	9.1	9.1	9.1	9.1	9.1	9.1	9.1	9.1	9.1	9.1	9.1
ドイツ		3.8	4.1	4.7	5.1	5.7	5.3	5.3	5.3	5.6	6.0	6.4	6.7	7.2	7.8	8.7	9.1	9.5	10.1	10.4	10.2	10.5	10.9	11.5	11.7	12.4	13.2	14.3	16.9	17.8	18.2	18.7	18.9	19.0	19.0	19.0	
中国		0.2	0.2	0.4	0.3	0.4	0.6	0.7	0.8	0.7	0.8	0.7	0.8	0.7	0.8	0.7	0.8	0.7	0.8	0.7	0.8	0.7	0.8	0.7	0.8	0.7	0.8	0.7	0.8	0.7	0.8	0.7	0.8	0.7	0.8	0.7	0.8
フランス		24.7	27.7	25.7	25.7	23.7	24.7	27.7	31.7	31.7	44.7	45.7	41.7	42.7	45.7	41.7	42.7	45.7	41.7	42.7	45.7	41.7	42.7	45.7	41.7	42.7	45.7	41.7	42.7	45.7	41.7	42.7	45.7	41.7	42.7	45.7	41.7
韓国		0.0	0.0	0.0	0.0	0.0	0.0	0.0	0.0	0.0	0.0	0.0	0.0	0.0	0.0	0.0	0.0	0.0	0.0	0.0	0.0	0.0	0.0	0.0	0.0	0.0	0.0	0.0	0.0	0.0	0.0	0.0	0.0	0.0	0.0	0.0	0.0

表20 数論文Top10%

国コード	国名	1981	1982	1983	1984	1985	1986	1987	1988	1989	1990	1991	1992	1993	1994	1995	1996	1997	1998	1999	2000	2001	2002	2003	2004	2005	2006	2007	2008	2009	2010	2011	2012	2013	2014	2015	
C001	USA	179.9	190.5	214.8	228.7	211.0	210.9	223.5	221.1	239.4	239.6	249.6	274.7	272.3	309.3	322.0	315.3	325.1	348.2	377.4	393.0	413.0	372.3	391.3	374.0	402.1	400.5	448.0	412.7	391.0	391.3	431.4	424.8	401.8	397.3	378.5	
C002	UK	5.0	8.1	13.1	24.4	14.1	15.1	22.2	16.0	17.2	15.2	27.3	26.1	28.3	37.0	35.3	36.1	41.8	45.0	51.2	63.3	65.6	58.7	70.7	74.4	71.2	88.8	93.7	75.3	97.0	86.2	96.3	119.3	128.1	124.1	143.8	
C003	JAPAN	3.0	4.0	5.0	4.1	4.0	2.0	8.1	7.0	10.1	21.3	10.1	7.0	10.1	9.0	15.1	25.1	24.5	33.0	35.1	38.3	33.3	41.3	41.1	48.0	38.1	31.2	30.8	40.1	48.0	47.8	41.1	58.1	48.4	41.4	43.3	
C004	GERMANY	10.0	5.0	8.1	19.2	10.0	17.2	9.0	6.1	22.3	22.2	14.0	36.4	45.4	44.4	22.0	29.3	39.2	50.1	65.0	53.2	64.4	65.6	60.7	71.2	69.3	85.3	125.0	136.0	104.2	144.2	138.2	128.1	113.8	113.8	113.8	
C005	PEOPLES R CHINA	0.0	0.0	0.0	0.0	1.0	1.0	0.0	1.0	1.0	1.0	1.0	1.0	1.0	1.0	0.0	4.0	2.0	5.0	3.0	5.0	4.0	7.1	4.0	5.1	11.0	8.1	14.8	17.8	28.8	17.2	15.4	21.8	33.3	35.3	38.3	
C006	FRANCE	7.0	5.0	8.1	7.1	3.0	6.0	8.1	6.0	6.1	12.1	12.0	18.0	18.0	18.0	18.0	18.0	18.0	18.0	18.0	18.0	18.0	18.0	18.0	18.0	18.0	18.0	18.0	18.0	18.0	18.0	18.0	18.0	18.0	18.0	18.0	18.0
C010	SOUTH KOREA	0.0	0.0	0.0	0.0	0.0	0.0	0.0	0.0	0.0	0.0	0.0	0.0	0.0	0.0	0.0	0.0	0.0	0.0	0.0	0.0	0.0	0.0	0.0	0.0	0.0	0.0	0.0	0.0	0.0	0.0	0.0	0.0	0.0	0.0	0.0	0.0
全体		197.9	211.6	238.0	259.1	234.3	240.1	253.8	252.1	269.3	278.0	291.9	318.0	344.3	389.3	383.3	386.3	426.3	444.3	428.3	483.3	483.3	483.3	483.3	483.3	483.3	483.3	483.3	483.3	483.3	483.3	483.3	483.3	483.3	483.3	483.3	

表21 3年移動平均—数論文Top10%